

Table 2. Confidence intervals (95%) for the amount of moisture lost to evapotranspiration before 108 Kentucky bluegrass entries from data set 15APP2 reach 75, 50, and 25% green cover. Entries are ranked based on their ET₅₀ values.

Rank	Selection	ET ₇₅	ET ₅₀	ET ₂₅
1.	AKB1820	5.204 to 6.335	7.270 to 8.106	8.931 to 10.28
2.	Ridgeline-1	5.237 to 6.417	7.063 to 7.918	8.498 to 9.810
3.	Ridgeline-2	4.603 to 6.125	6.714 to 7.821	8.308 to 10.03
4.	Mallard-1	4.818 to 6.058	6.550 to 7.439	7.896 to 9.205
5.	AKB1820	5.204 to 6.335	7.270 to 8.106	8.931 to 10.28
6.	AKB1415	4.061 to 5.593	6.270 to 7.377	7.974 to 9.666
7.	Mallard-2	4.784 to 5.671	6.315 to 6.948	7.581 to 8.489
8.	Ridgeline-3	4.811 to 5.540	6.357 to 6.878	7.686 to 8.433
9.	AKB1884	4.242 to 5.096	6.136 to 6.749	7.769 to 8.665
10.	AKB1351	2.044 to 4.988	5.379 to 7.471	7.576 to 11.09
11.	AKB1607	3.829 to 5.372	5.844 to 6.950	7.383 to 9.002
12.	Diva	3.464 to 5.312	5.587 to 6.913	7.141 to 9.081
13.	AKB510	4.138 to 5.146	5.887 to 6.607	7.336 to 8.367
14.	AKB1869	3.691 to 4.689	5.857 to 6.573	7.709 to 8.773
15.	A12-10	3.713 to 5.143	5.686 to 6.711	7.227 to 8.711
16.	AKB1760	4.115 to 5.081	5.835 to 6.526	7.270 to 8.255
17.	America	4.117 to 5.102	5.711 to 6.414	7.021 to 8.012
18.	Mallard-3	3.573 to 4.785	5.539 to 6.409	7.142 to 8.395
19.	AKB1381	2.905 to 4.774	5.300 to 6.637	7.103 to 9.093
20.	Midnight	3.511 to 4.587	5.577 to 6.350	7.316 to 8.440
21.	Ridgeline-5	4.103 to 4.977	5.650 to 6.273	6.946 to 7.821
22.	AKB1777	3.739 to 4.906	5.538 to 6.374	6.996 to 8.184
23.	AKB1006	3.706 to 4.967	5.501 to 6.404	6.926 to 8.208
24.	AKB434	3.526 to 4.789	5.444 to 6.350	6.989 to 8.285
25.	Mallard-4	3.413 to 4.974	5.262 to 6.382	6.658 to 8.242
26.	AKB1804	3.637 to 4.762	5.398 to 6.205	6.834 to 7.973
27.	AKB1318	3.835 to 4.797	5.414 to 6.101	6.719 to 7.679
28.	AKB1046	3.419 to 4.573	5.322 to 6.153	6.888 to 8.070
29.	AKB3169	2.579 to 4.190	5.136 to 6.276	7.168 to 8.887
30.	Ridgeline-9	3.060 to 4.605	5.124 to 6.235	6.729 to 8.322
31.	AKB1040	2.950 to 4.385	5.160 to 6.188	6.932 to 8.429
32.	AKB1058	3.659 to 4.743	5.260 to 6.037	6.556 to 7.638
33.	Bedazzled	3.551 to 4.611	5.264 to 6.027	6.676 to 7.744
34.	AKB1322	2.472 to 4.316	4.947 to 6.258	6.838 to 8.782
35.	AKB1107	3.157 to 4.519	5.084 to 6.065	6.615 to 8.006
36.	Ridgeline-6	3.320 to 4.459	5.143 to 5.964	6.640 to 7.796
37.	Baron	3.196 to 4.531	5.060 to 6.023	6.541 to 7.898
38.	A04-1260	2.501 to 4.375	4.849 to 6.188	6.621 to 8.577
39.	Shamrock	2.793 to 4.684	4.808 to 6.171	6.273 to 8.206

40.	AKB3201	3.489 to 4.469	5.074 to 5.780	6.386 to 7.364
41.	NK-2	2.827 to 4.250	4.883 to 5.908	6.521 to 7.985
42.	Ridgeline-7	3.497 to 4.535	5.020 to 5.765	6.256 to 7.285
43.	AKB974	3.177 to 4.223	5.001 to 5.757	6.525 to 7.589
44.	Ridgeline-4	3.332 to 4.312	5.017 to 5.725	6.426 to 7.412
45.	Ridgeline-8	3.238 to 4.350	4.954 to 5.758	6.358 to 7.479
46.	Ridgeline-10	3.162 to 4.260	4.959 to 5.753	6.445 to 7.559
47.	AKB1028	2.911 to 4.173	4.860 to 5.772	6.443 to 7.734
48.	AKB1762	2.549 to 4.072	4.760 to 5.851	6.513 to 8.087
49.	Brooklawn	2.140 to 4.666	4.372 to 6.191	5.861 to 8.458
50.	AKB2563	2.832 to 3.854	4.891 to 5.625	6.647 to 7.699
51.	AKB1071	3.125 to 4.295	4.807 to 5.655	6.163 to 7.341
52.	AKB1390	2.694 to 4.483	4.559 to 5.857	5.920 to 7.735
53.	Geronimo	3.083 to 4.062	4.843 to 5.553	6.327 to 7.321
54.	AKB3241	2.914 to 3.930	4.779 to 5.516	6.354 to 7.391
55.	AKB1105	2.932 to 4.222	4.670 to 5.608	6.049 to 7.353
56.	AKB1098	3.054 to 4.075	4.737 to 5.480	6.136 to 7.168
57.	AKB1095	3.005 to 4.166	4.667 to 5.513	6.010 to 7.181
58.	AKB1445	2.792 to 4.136	4.593 to 5.571	6.017 to 7.384
59.	AKB2538	2.600 to 4.000	4.540 to 5.555	6.079 to 7.512
60.	AKB985	2.901 to 4.370	4.464 to 5.534	5.628 to 7.096
61.	AKB2239	2.564 to 3.985	4.470 to 5.504	5.972 to 7.427
62.	AKB1027	2.935 to 4.029	4.583 to 5.382	5.930 to 7.036
63.	AKB1059	3.242 to 4.194	4.625 to 5.316	5.753 to 6.693
64.	AKB1774	2.833 to 4.056	4.505 to 5.399	5.841 to 7.080
65.	AKB1079	2.455 to 4.159	4.310 to 5.553	5.686 to 7.425
66.	AKB3216	2.770 to 4.324	4.354 to 5.490	5.516 to 7.075
67.	AKB2118	2.663 to 3.622	4.539 to 5.235	6.140 to 7.123
68.	AKB3179	2.661 to 3.887	4.417 to 5.314	5.832 to 7.084
69.	AKB2149	2.275 to 3.572	4.374 to 5.306	6.090 to 7.423
70.	AKB3128	2.702 to 3.676	4.464 to 5.176	5.953 to 6.950
71.	NK-3	2.218 to 3.736	4.201 to 5.302	5.748 to 7.307
72.	AKB1005	2.446 to 3.652	4.283 to 5.164	5.778 to 7.017
73.	A05-303	2.046 to 3.684	4.130 to 5.311	5.735 to 7.417
74.	AKB1908	2.380 to 3.820	4.158 to 5.216	5.534 to 7.013
75.	KH3492	2.152 to 3.397	4.235 to 5.129	5.951 to 7.229
76.	A05-312	2.173 to 3.627	4.117 to 5.175	5.643 to 7.140
77.	AKB2119	1.926 to 3.326	4.148 to 5.142	5.948 to 7.380
78.	NK-1	1.911 to 3.375	4.092 to 5.136	5.836 to 7.335
79.	AKB2335	2.411 to 3.609	4.137 to 5.020	5.528 to 6.765
80.	AKB2202	2.265 to 3.375	4.145 to 4.954	5.706 to 6.851
81.	AKB1109	2.519 to 3.415	4.192 to 4.853	5.614 to 6.541
82.	AKB2107	2.485 to 3.507	4.115 to 4.873	5.463 to 6.521

83.	AKB1129	2.256 to 3.322	4.098 to 4.876	5.634 to 6.735
84.	AKB2235	2.011 to 3.278	3.937 to 4.857	5.495 to 6.804
85.	AKB2252	1.974 to 3.331	3.895 to 4.881	5.422 to 6.825
86.	AKB3275	1.808 to 3.279	3.791 to 4.854	5.344 to 6.861
87.	AKB2260	0.9762 to 2.810	3.705 to 4.930	5.838 to 7.645
88.	AKB1074	2.239 to 3.297	3.907 to 4.692	5.278 to 6.385
89.	A12-11	1.980 to 3.244	3.794 to 4.720	5.244 to 6.561
90.	AKB2242	0.8658 to 2.707	3.600 to 4.823	5.736 to 7.537
91.	AKB2306	1.430 to 2.733	3.712 to 4.614	5.591 to 6.899
92.	AKB2373	1.679 to 3.028	3.592 to 4.567	5.107 to 6.505
93.	AKB2460	1.646 to 2.882	3.626 to 4.509	5.236 to 6.507
94.	AKB2262	0.6508 to 2.339	3.416 to 4.513	5.629 to 7.240
95.	AKB2150	1.735 to 2.837	3.536 to 4.337	5.011 to 6.163
96.	AKB2226	1.569 to 2.598	3.532 to 4.261	5.182 to 6.236
97.	AKB1971	0.8844 to 2.449	3.331 to 4.379	5.281 to 6.807
98.	AKB2203	1.326 to 2.669	3.378 to 4.321	5.019 to 6.385
99.	Snap	0.8988 to 2.147	3.355 to 4.180	5.412 to 6.612
100.	AKB2254	1.236 to 2.310	3.379 to 4.115	5.188 to 6.256
101.	AKB2194	1.021 to 2.268	3.049 to 3.903	4.685 to 5.930
102.	AKB2358	0.9027 to 2.143	3.032 to 3.868	4.768 to 5.985
103.	AKB1902	1.389 to 2.226	3.146 to 3.735	4.642 to 5.505
104.	AKB2234	1.265 to 2.250	3.030 to 3.721	4.485 to 5.501
105.	AKB2551	1.555 to 2.162	3.052 to 3.486	4.354 to 5.005
106.	AKB2122	0.8943 to 2.049	2.878 to 3.658	4.494 to 5.634
107.	AKB2427	0.4547 to 2.076	2.699 to 3.764	4.425 to 5.970
108.	AKB2151	0.4985 to 1.456	2.390 to 2.999	3.968 to 4.854

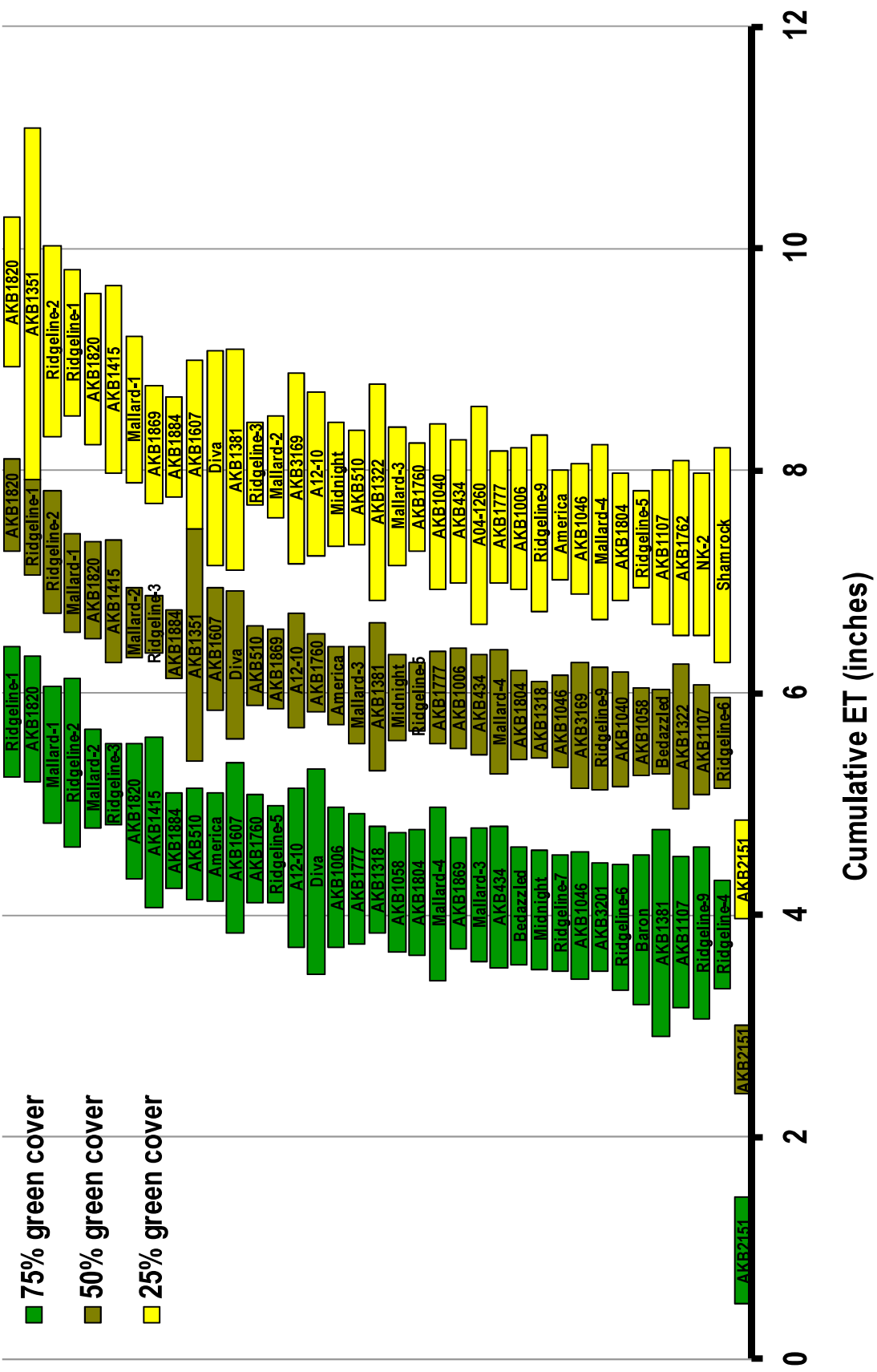


Figure 4. Confidence intervals (95%) for the moisture lost to evapotranspiration before the top-performing (top third) of 108 Kentucky bluegrass entries from data set 15APP2 reach 75, 50, and 25% green cover. Both the top and bottom performing entries are included for reference.