

Table 2. Confidence intervals (95%) for the amount of moisture lost to evapotranspiration after irrigation is withheld before selections (10ALP1 data set) reach 75, 50, and 25% green cover. Selections are ranked based on their ET₅₀ values.

Rank	Selection	ET ₇₅	ET ₅₀	ET ₂₅
1.	APRT2247	6.273 to 6.969	7.879 to 8.372	9.251 to 10.01
2.	APRT2301	6.370 to 6.979	7.894 to 8.323	9.214 to 9.870
3.	APR2477	6.316 to 6.968	7.821 to 8.280	9.111 to 9.807
4.	APRT2284	6.064 to 6.822	7.770 to 8.305	9.218 to 10.05
5.	APRT2441	6.434 to 6.985	7.820 to 8.207	9.029 to 9.606
6.	APRT2342	6.181 to 6.907	7.738 to 8.247	9.057 to 9.828
7.	APRT2118	6.073 to 6.928	7.600 to 8.197	8.850 to 9.742
8.	APR2212	6.046 to 6.576	7.539 to 7.907	8.864 to 9.407
9.	Radiant II	5.806 to 6.741	7.396 to 8.047	8.688 to 9.651
10.	APR2351	6.083 to 6.620	7.518 to 7.891	8.784 to 9.331
11.	APR2225	5.938 to 6.366	7.483 to 7.781	8.893 to 9.331
12.	APR2190	5.813 to 6.493	7.389 to 7.861	8.749 to 9.444
13.	APRT2256	5.651 to 6.333	7.375 to 7.852	8.878 to 9.591
14.	APRT2344	5.729 to 6.367	7.327 to 7.771	8.726 to 9.376
15.	APR2472	5.700 to 6.311	7.327 to 7.752	8.761 to 9.385
16.	APR2445	5.518 to 6.336	7.237 to 7.807	8.696 to 9.539
17.	APRT2114	5.528 to 6.234	7.275 to 7.769	8.797 to 9.530
18.	APR2208	5.715 to 6.485	7.252 to 7.785	8.551 to 9.325
19.	APR2389	5.725 to 6.308	7.307 to 7.711	8.706 to 9.297
20.	APR2476	5.517 to 6.313	7.220 to 7.775	8.671 to 9.488
21.	APR2201	5.959 to 6.493	7.297 to 7.665	8.472 to 8.998
22.	APR2353	5.518 to 6.159	7.253 to 7.701	8.784 to 9.447
23.	APR2470	5.802 to 6.308	7.291 to 7.641	8.624 to 9.130
24.	APR2386	5.832 to 6.373	7.276 to 7.650	8.554 to 9.092
25.	APR2485	5.658 to 6.189	7.276 to 7.645	8.729 to 9.268
26.	APR2390	5.593 to 6.311	7.208 to 7.707	8.600 to 9.326
27.	APR2393	5.490 to 6.047	7.235 to 7.624	8.803 to 9.378
28.	APR2352	5.874 to 6.434	7.225 to 7.611	8.408 to 8.957
29.	PR909	5.766 to 6.181	7.251 to 7.538	8.609 to 9.022
30.	APR2385	5.452 to 6.159	7.139 to 7.632	8.607 to 9.325
31.	APR2483	5.720 to 6.231	7.203 to 7.556	8.532 to 9.038
32.	LineDrive GLS	5.689 to 6.194	7.153 to 7.501	8.465 to 8.962
33.	APR2486	5.469 to 6.075	7.101 to 7.522	8.548 to 9.156
34.	APR2471	5.566 to 6.072	7.078 to 7.428	8.438 to 8.937
35.	APR2349	5.188 to 6.101	6.924 to 7.562	8.381 to 9.302
36.	APR2484	5.626 to 6.204	7.038 to 7.437	8.279 to 8.841
37.	APR2394	5.487 to 5.974	7.057 to 7.396	8.481 to 8.964
38.	APR2474	5.521 to 6.084	7.025 to 7.414	8.360 to 8.912
39.	APR2152	5.292 to 6.191	6.903 to 7.527	8.246 to 9.135
40.	APRT2488	5.257 to 6.201	6.887 to 7.542	8.232 to 9.166
41.	APR2348	5.106 to 5.846	6.917 to 7.436	8.500 to 9.254
42.	APRT2288	5.183 to 5.755	6.948 to 7.350	8.539 to 9.119
43.	APR2391	5.670 to 6.156	6.979 to 7.312	8.146 to 8.611
44.	APR2442	5.230 to 6.078	6.849 to 7.438	8.215 to 9.051
45.	Phenom	5.308 to 5.861	6.951 to 7.337	8.428 to 8.978

46.	APR2350	5.274 to 5.960	6.901 to 7.378	8.322 to 9.001
47.	Soprano	5.424 to 5.865	6.970 to 7.276	8.385 to 8.818
48.	APR2478	5.402 to 5.988	6.919 to 7.324	8.262 to 8.834
49.	APR2387	5.467 to 6.058	6.917 to 7.325	8.194 to 8.766
50.	APR2384	5.170 to 5.976	6.820 to 7.381	8.229 to 9.027
51.	APR1418	4.942 to 5.771	6.745 to 7.328	8.299 to 9.135
52.	APR2388	4.838 to 5.532	6.732 to 7.223	8.415 to 9.126
53.	Palmer V	4.974 to 5.725	6.679 to 7.206	8.164 to 8.907
54.	APR2475	4.538 to 5.588	6.567 to 7.313	8.273 to 9.362
55.	APR2346	4.623 to 5.398	6.654 to 7.204	8.444 to 9.251
56.	APR2392	4.934 to 5.682	6.658 to 7.183	8.162 to 8.905
57.	APR2354	5.034 to 5.732	6.645 to 7.134	8.056 to 8.738
58.	APRT2489	4.773 to 5.561	6.603 to 7.160	8.200 to 8.995
59.	Palmer GLS	5.165 to 5.681	6.671 to 7.031	8.030 to 8.527
60.	APR2480	4.403 to 5.332	6.419 to 7.082	8.155 to 9.112
61.	APR2347	4.947 to 5.504	6.544 to 6.935	7.982 to 8.524
62.	ESP	4.724 to 5.322	6.465 to 6.889	8.034 to 8.629
63.	APR2482	4.433 to 5.438	6.312 to 7.027	7.899 to 8.910
64.	APR2479	4.551 to 5.155	6.383 to 6.814	8.040 to 8.647
65.	APR2473	4.441 to 5.255	6.188 to 6.769	7.708 to 8.514
66.	APR2481	4.095 to 4.920	6.178 to 6.771	8.014 to 8.868
67.	APR2345	4.117 to 4.904	6.027 to 6.594	7.712 to 8.509
68.	KSA	3.127 to 3.802	5.349 to 5.836	7.369 to 8.071

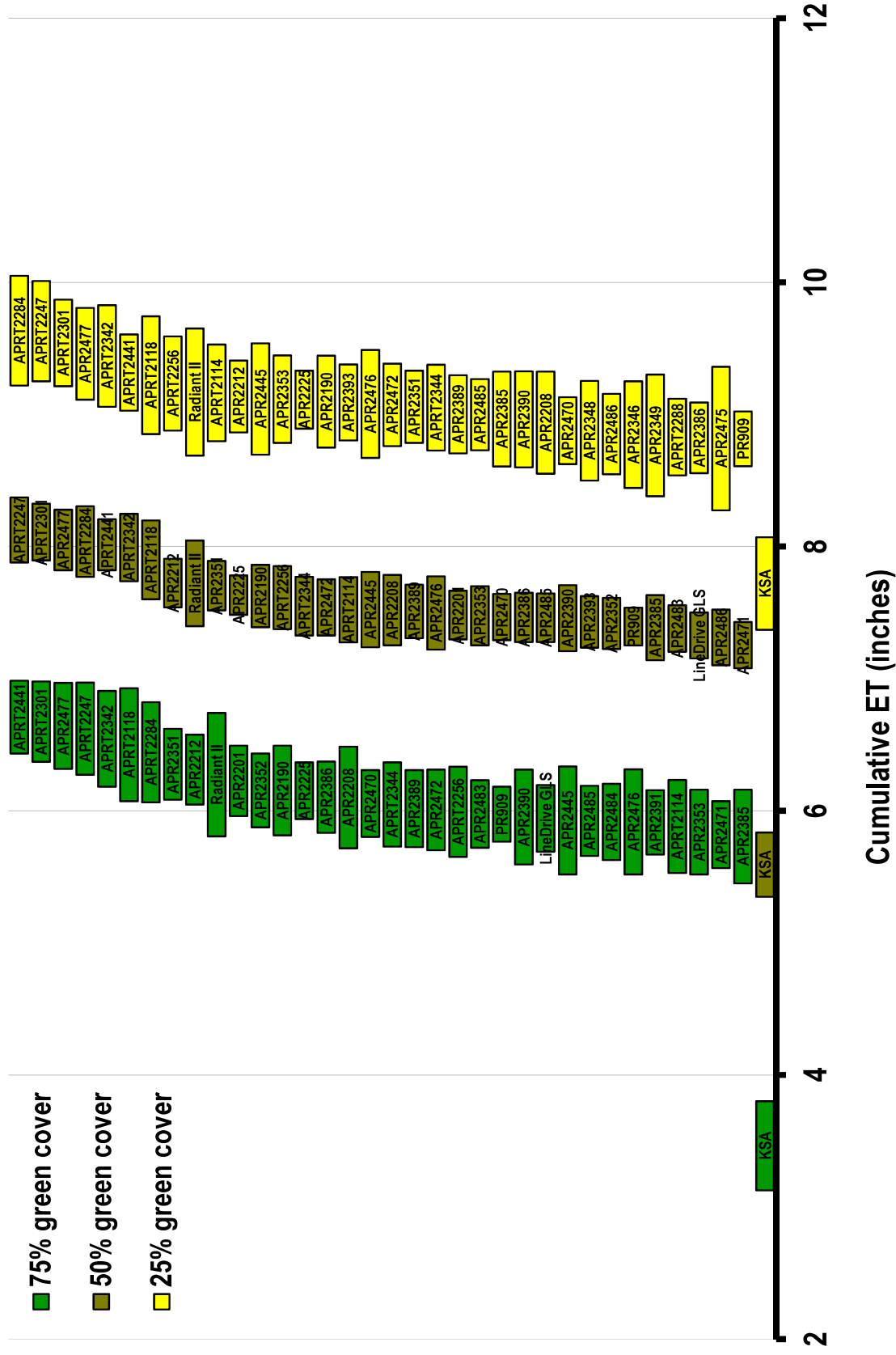


Figure 3. Confidence intervals (95%) for the amount of moisture lost to evapotranspiration after irrigation is withheld before the top ½ of the selections from the 10ALP1 data set reach 75, 50, and 25% green cover. The bottom performing selection is included for reference.