

Table 2. Confidence intervals (95%) for the amount of moisture lost to evapotranspiration before 58 perennial ryegrass entries from data set 15ALP5 reach 75, 50, and 25% green cover. Entries are ranked based on their ET₅₀ values.

Rank	Selection	ET ₇₅	ET ₅₀	ET ₂₅
1.	APR2856	5.421 to 6.111	7.576 to 8.095	9.522 to 10.29
2.	APR2535	5.321 to 5.846	7.388 to 7.784	9.299 to 9.877
3.	APR2973	5.444 to 6.058	7.342 to 7.804	9.066 to 9.725
4.	APR2965	5.019 to 5.680	7.184 to 7.684	9.151 to 9.886
5.	APR2839	4.867 to 5.743	7.015 to 7.680	8.905 to 9.876
6.	APR2971	4.960 to 5.800	7.012 to 7.651	8.822 to 9.745
7.	APR2972	5.502 to 5.952	7.144 to 7.485	8.664 to 9.138
8.	APR2908	5.068 to 5.698	7.009 to 7.490	8.773 to 9.460
9.	APR2970	4.942 to 5.738	6.926 to 7.533	8.683 to 9.554
10.	APR2977	4.774 to 5.384	6.878 to 7.344	8.803 to 9.482
11.	APR2944	4.696 to 5.662	6.733 to 7.472	8.493 to 9.558
12.	APR2462	5.009 to 5.442	6.847 to 7.180	8.564 to 9.038
13.	APR2853	4.824 to 5.451	6.772 to 7.253	8.542 to 9.233
14.	APR2440	4.521 to 5.337	6.649 to 7.273	8.537 to 9.449
15.	APR2198	4.851 to 5.372	6.753 to 7.154	8.507 to 9.082
16.	APR2616	4.968 to 5.410	6.736 to 7.078	8.383 to 8.868
17.	APR2909	5.003 to 5.500	6.698 to 7.084	8.259 to 8.803
18.	APR2966	4.985 to 5.495	6.690 to 7.085	8.256 to 8.814
19.	APR2967	4.489 to 5.204	6.597 to 7.145	8.495 to 9.296
20.	Applaud II	4.996 to 5.415	6.704 to 7.029	8.297 to 8.757
21.	APR2237	4.813 to 5.398	6.626 to 7.078	8.277 to 8.922
22.	APR2436	5.071 to 5.495	6.676 to 7.005	8.167 to 8.630
23.	APR2536	4.847 to 5.301	6.625 to 6.978	8.278 to 8.781
24.	APR2964	4.723 to 5.459	6.488 to 7.060	8.052 to 8.865
25.	APR2946	4.686 to 5.242	6.526 to 6.957	8.210 to 8.828
26.	APR2969	4.529 to 5.257	6.395 to 6.961	8.057 to 8.869
27.	APR2975	4.352 to 5.281	6.303 to 7.022	7.988 to 9.028
28.	APR2451	4.369 to 5.299	6.272 to 6.994	7.911 to 8.952
29.	APR2448	4.715 to 5.052	6.499 to 6.761	8.189 to 8.566
30.	APR2525	4.260 to 5.269	6.233 to 7.014	7.917 to 9.049
31.	APR2978	4.383 to 5.208	6.289 to 6.930	7.961 to 8.886
32.	APR2943	4.591 to 5.171	6.337 to 6.791	7.921 to 8.571
33.	APR2223	4.512 to 4.987	6.371 to 6.740	8.095 to 8.628
34.	APR2445	4.642 to 5.151	6.318 to 6.718	7.854 to 8.426
35.	APR2979	4.645 to 5.188	6.298 to 6.725	7.802 to 8.412
36.	APR2900	4.633 to 5.186	6.293 to 6.727	7.800 to 8.420
37.	APR2450	4.566 to 5.038	6.283 to 6.654	7.868 to 8.401
38.	APR2974	4.162 to 5.349	5.923 to 6.857	7.352 to 8.698
39.	APR2647	4.215 to 4.913	6.097 to 6.640	7.778 to 8.569

40.	APR2463	4.109 to 4.781	6.104 to 6.623	7.900 to 8.662
41.	Shining Star	4.855 to 5.239	6.202 to 6.507	7.445 to 7.878
42.	APR2976	4.015 to 4.938	5.991 to 6.706	7.696 to 8.743
43.	APR2282	4.249 to 4.722	6.125 to 6.493	7.864 to 8.402
44.	APR2637	3.971 to 4.910	5.923 to 6.652	7.600 to 8.669
45.	APR2968	3.970 to 4.760	5.930 to 6.541	7.656 to 8.555
46.	APR2115	4.172 to 4.662	5.960 to 6.343	7.605 to 8.167
47.	APR2186	4.322 to 4.848	5.913 to 6.332	7.355 to 7.964
48.	APR2282	4.249 to 4.722	6.125 to 6.493	7.864 to 8.402
49.	APR2639	3.928 to 4.425	5.824 to 6.209	7.572 to 8.142
50.	APR2154	4.111 to 4.649	5.803 to 6.227	7.337 to 7.961
51.	APR2195	4.054 to 4.669	5.653 to 6.142	7.074 to 7.795
52.	APR2190	4.009 to 4.687	5.624 to 6.162	7.040 to 7.834
53.	APR2283	3.726 to 4.553	5.545 to 6.189	7.116 to 8.074
54.	APR2104	2.912 to 4.437	5.000 to 6.149	6.606 to 8.345
55.	APR2149	3.743 to 4.401	5.368 to 5.886	6.792 to 7.570
56.	APR2104	2.912 to 4.437	5.000 to 6.149	6.606 to 8.345
57.	Pop	2.852 to 4.150	4.749 to 5.720	6.224 to 7.714
58.	APR2263	2.713 to 3.951	4.613 to 5.523	6.103 to 7.507

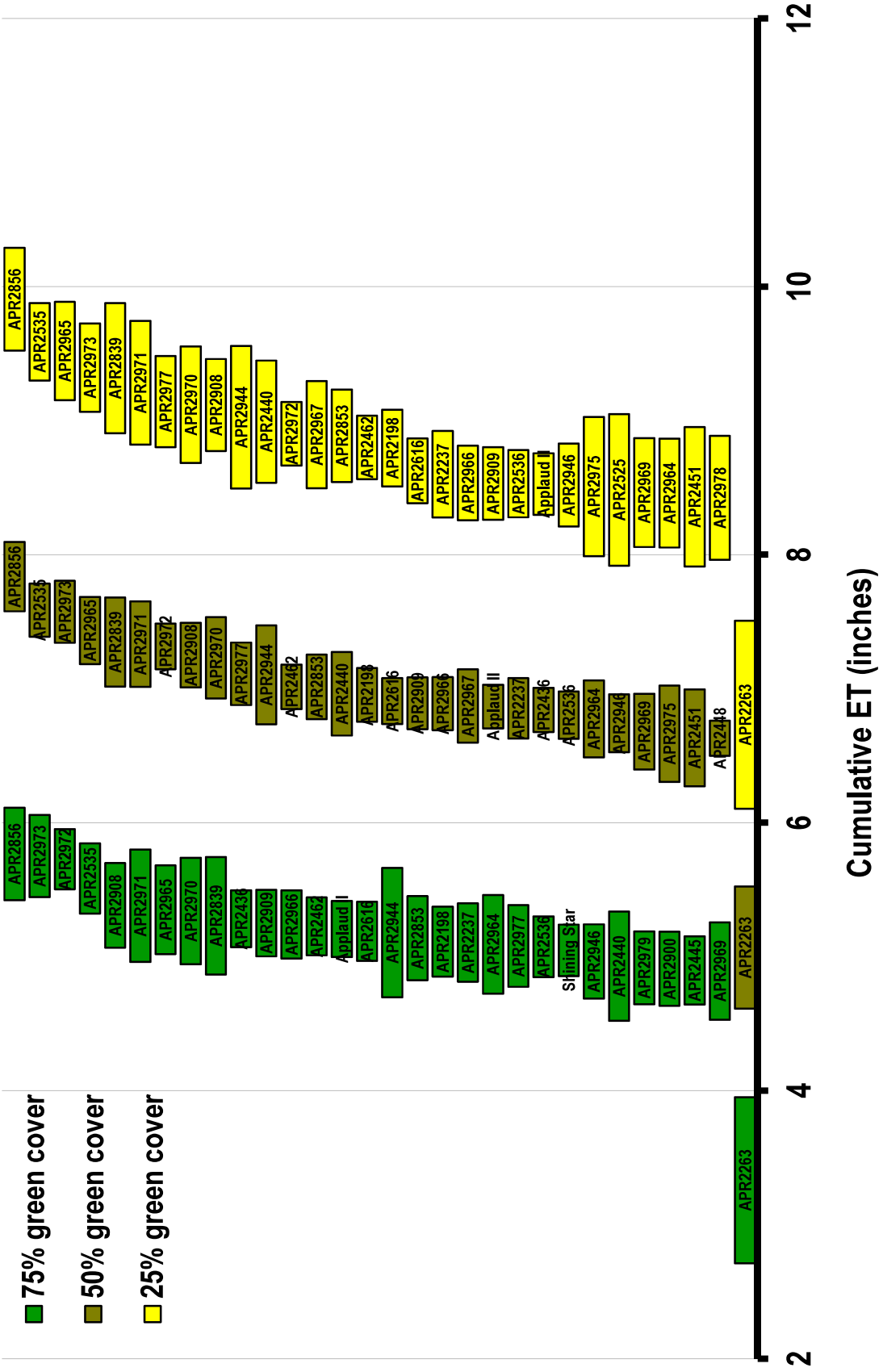


Figure 3. Confidence intervals (95%) for the moisture lost to evapotranspiration before the top-performing (top half) of 58 perennial ryegrass entries from data set 15ALP5 reach 75, 50, and 25% green cover. Both the top and bottom performing entries are included for reference.

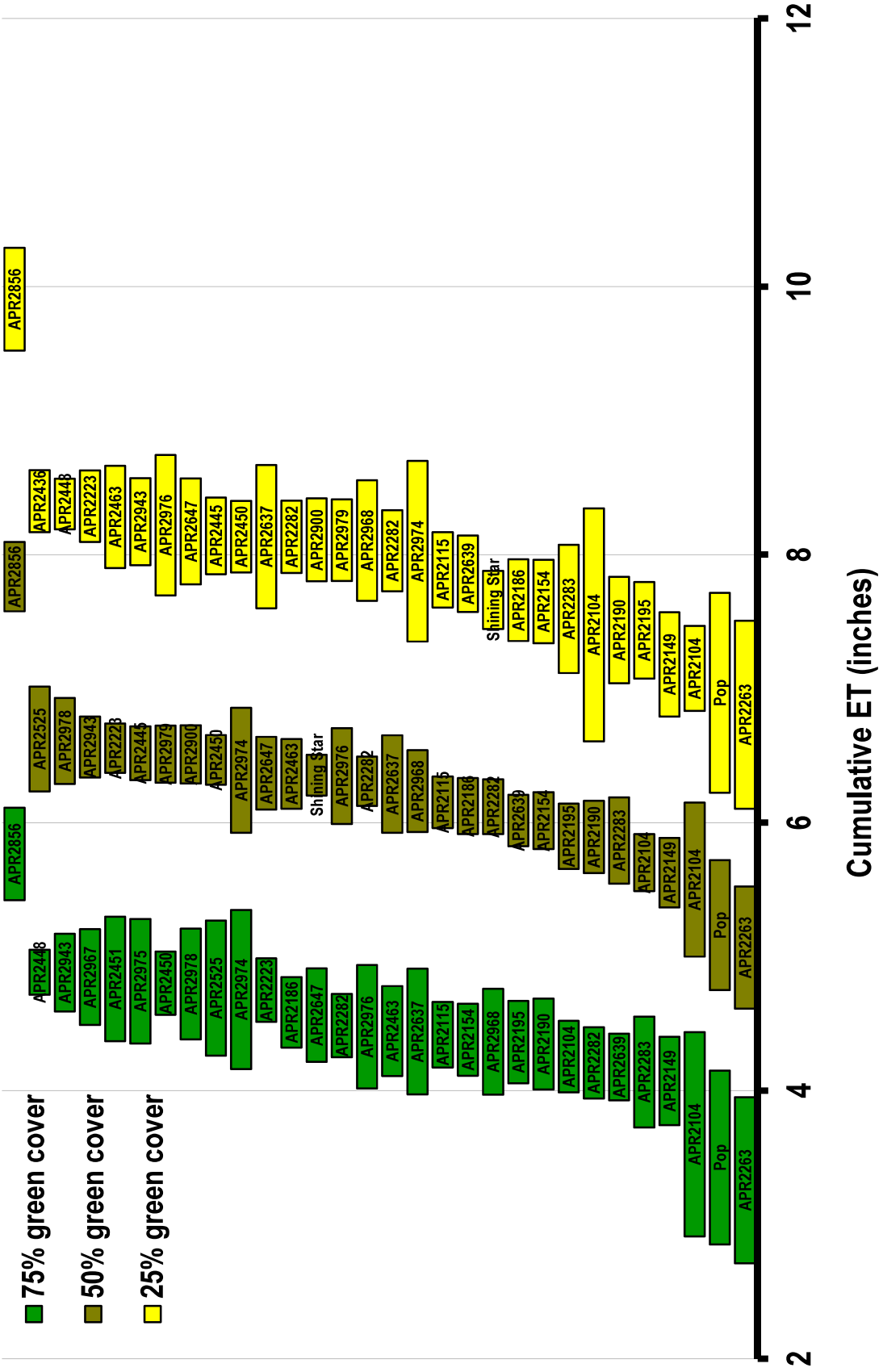


Figure 4. Confidence intervals (95%) for the moisture lost to evapotranspiration before the bottom-performing (bottom half) of 58 perennial ryegrass entries from data set 15ALP5 reach 75, 50, and 25% green cover. Both the top and bottom performing entries are included for reference.