

Table 2. Confidence intervals (95%) for the amount of moisture lost to evapotranspiration before 100 perennial ryegrass entries from data set 15ALP2 reach 75, 50, and 25% green cover. Entries are ranked based on their ET₅₀ values.

Rank	Selection	ET ₇₅	ET ₅₀	ET ₂₅
1.	APMT003	4.011 to 5.669	6.248 to 7.590	7.794 to 10.21
2.	APMT006	4.257 to 5.765	5.855 to 6.930	6.953 to 8.600
3.	APR2944	3.646 to 5.209	5.494 to 6.620	6.822 to 8.553
4.	APMT005	3.283 to 5.141	5.370 to 6.727	6.807 to 8.961
5.	APR2105	4.143 to 5.298	5.599 to 6.415	6.700 to 7.887
6.	APR2154	3.723 to 4.740	5.511 to 6.244	6.969 to 8.080
7.	APR2647	3.764 to 4.981	5.442 to 6.311	6.737 to 8.026
8.	AMFT118	3.931 to 4.724	5.572 to 6.140	6.963 to 7.806
9.	APR2925	2.451 to 4.686	4.960 to 6.599	6.639 to 9.343
10.	APR2924	3.314 to 4.450	5.351 to 6.177	7.001 to 8.290
11.	APR2908	4.022 to 5.072	5.387 to 6.128	6.446 to 7.496
12.	APR2616	3.249 to 4.416	5.288 to 6.135	6.933 to 8.248
13.	APR2869	3.608 to 4.754	5.275 to 6.096	6.592 to 7.790
14.	APR2853	3.450 to 4.534	5.265 to 6.047	6.737 to 7.904
15.	APR2909	3.455 to 4.755	5.183 to 6.116	6.511 to 7.878
16.	APR2943	3.390 to 4.587	5.169 to 6.030	6.577 to 7.848
17.	APR2926	2.665 to 4.418	4.952 to 6.224	6.628 to 8.643
18.	APR2856	2.969 to 4.150	5.136 to 5.992	6.896 to 8.240
19.	APR2861	2.898 to 4.475	4.945 to 6.086	6.478 to 8.211
20.	APR2282	3.222 to 4.455	5.063 to 5.953	6.520 to 7.837
21.	APR2934	3.125 to 4.531	4.998 to 6.013	6.434 to 7.937
22.	APR2905	3.394 to 4.697	5.038 to 5.972	6.296 to 7.637
23.	APR2942	2.801 to 4.497	4.882 to 6.110	6.409 to 8.277
24.	APMT008	3.402 to 4.387	5.132 to 5.842	6.562 to 7.599
25.	APR2703	3.116 to 4.479	4.952 to 5.936	6.369 to 7.814
26.	APR2237	3.200 to 4.481	4.979 to 5.903	6.369 to 7.715
27.	APR2939	2.641 to 4.125	4.895 to 5.968	6.640 to 8.321
28.	APR2637	3.013 to 4.123	5.002 to 5.804	6.632 to 7.844
29.	APR2751	3.056 to 4.387	4.850 to 5.812	6.244 to 7.641
30.	APR2763	3.453 to 4.514	4.934 to 5.695	6.114 to 7.179
31.	APR2719	3.375 to 4.437	4.902 to 5.666	6.127 to 7.200
32.	APR2901	2.244 to 3.761	4.695 to 5.777	6.606 to 8.334
33.	APR2902	2.870 to 4.194	4.715 to 5.675	6.161 to 7.558
34.	APR2870	3.363 to 4.373	4.828 to 5.555	6.011 to 7.022
35.	APR2857	3.035 to 4.076	4.803 to 5.558	6.260 to 7.351
36.	APR2907	3.152 to 4.311	4.756 to 5.594	6.027 to 7.210
37.	APR2899	3.239 to 4.258	4.792 to 5.529	6.056 to 7.091
38.	APR2895	2.803 to 4.088	4.669 to 5.601	6.146 to 7.505
39.	Soprano	3.030 to 4.091	4.747 to 5.517	6.153 to 7.256

40.	APR2906	2.900 to 4.146	4.659 to 5.564	6.052 to 7.350
41.	APRT2114	3.313 to 4.244	4.772 to 5.444	5.970 to 6.904
42.	APR2862	2.991 to 4.098	4.693 to 5.498	6.073 to 7.221
43.	APR2928	2.724 to 3.905	4.658 to 5.513	6.227 to 7.486
44.	APR2945	2.759 to 4.023	4.571 to 5.490	6.007 to 7.331
45.	APR2931	2.497 to 4.066	4.456 to 5.593	5.936 to 7.601
46.	APR2910	2.769 to 3.872	4.595 to 5.396	6.090 to 7.251
47.	APR2914	2.315 to 3.854	4.438 to 5.547	6.071 to 7.732
48.	APR2917	2.691 to 3.911	4.530 to 5.417	6.006 to 7.289
49.	AMF117	3.343 to 3.927	4.761 to 5.185	6.016 to 6.605
50.	APR2912	2.950 to 3.993	4.593 to 5.354	5.939 to 7.014
51.	APR2913	2.369 to 3.720	4.475 to 5.447	6.148 to 7.605
52.	APR2932	2.386 to 3.773	4.457 to 5.456	6.088 to 7.578
53.	APR2936	2.627 to 4.043	4.436 to 5.468	5.829 to 7.309
54.	APR2897	2.742 to 3.875	4.534 to 5.359	5.992 to 7.179
55.	APR2865	2.675 to 3.873	4.509 to 5.382	5.988 to 7.248
56.	APR2940	2.865 to 4.079	4.499 to 5.385	5.789 to 7.035
57.	APR2916	2.547 to 3.946	4.430 to 5.448	5.895 to 7.370
58.	APR2918	2.251 to 3.530	4.453 to 5.366	6.235 to 7.623
59.	APR2911	2.766 to 3.903	4.487 to 5.318	5.880 to 7.062
60.	APR2929	2.629 to 4.010	4.395 to 5.403	5.758 to 7.196
61.	APR2639	2.042 to 3.608	4.340 to 5.454	6.117 to 7.823
62.	APR2941	2.529 to 3.836	4.417 to 5.367	5.912 to 7.292
63.	APR2753	2.607 to 3.747	4.474 to 5.302	5.997 to 7.199
64.	APR2855	2.885 to 3.890	4.502 to 5.238	5.835 to 6.870
65.	APR2923	2.700 to 3.848	4.446 to 5.285	5.858 to 7.056
66.	APR2894	2.321 to 3.734	4.346 to 5.367	5.933 to 7.439
67.	APR2915	2.272 to 3.517	4.382 to 5.274	6.094 to 7.431
68.	APR2938	2.534 to 3.804	4.365 to 5.291	5.822 to 7.156
69.	APR2871	2.706 to 3.794	4.413 to 5.210	5.807 to 6.939
70.	APR2868	2.439 to 3.828	4.291 to 5.304	5.732 to 7.191
71.	Pizzazz 2	2.969 to 3.950	4.433 to 5.154	5.630 to 6.626
72.	APR2746	2.403 to 3.767	4.294 to 5.286	5.774 to 7.212
73.	APR2919	2.490 to 3.733	4.331 to 5.238	5.804 to 7.112
74.	APR2930	2.413 to 3.590	4.358 to 5.211	5.944 to 7.192
75.	APR2922	2.521 to 3.689	4.324 to 5.178	5.785 to 7.011
76.	APR2946	2.669 to 3.681	4.350 to 5.092	5.740 to 6.794
77.	APR2858	2.214 to 3.545	4.179 to 5.143	5.739 to 7.147
78.	APR2863	2.787 to 3.776	4.287 to 5.019	5.514 to 6.530
79.	APR2859	2.445 to 3.649	4.204 to 5.086	5.613 to 6.873
80.	APR2933	2.482 to 3.798	4.149 to 5.120	5.445 to 6.814
81.	APR2852	2.130 to 3.337	4.194 to 5.059	5.879 to 7.161
82.	APR2935	2.203 to 3.359	4.205 to 5.037	5.848 to 7.073

83.	APR2867	2.560 to 3.655	4.215 to 5.023	5.560 to 6.700
84.	APR2478	2.721 to 3.439	4.282 to 4.815	5.643 to 6.392
85.	APR2849	2.490 to 3.721	4.072 to 4.987	5.313 to 6.593
86.	APR2920	2.456 to 3.592	4.105 to 4.946	5.432 to 6.619
87.	APR2864	2.408 to 3.572	4.071 to 4.932	5.403 to 6.621
88.	Manhattan 6	1.937 to 3.409	3.926 to 4.990	5.466 to 7.019
89.	APR2866	1.944 to 3.312	3.943 to 4.928	5.523 to 6.966
90.	APR2927	1.089 to 2.925	3.813 to 5.043	5.877 to 7.822
91.	APR2860	1.851 to 3.429	3.849 to 4.988	5.366 to 7.028
92.	APR2937	2.114 to 3.363	3.919 to 4.835	5.358 to 6.673
93.	APR2445	2.502 to 3.385	4.017 to 4.679	5.289 to 6.217
94.	APR2850	1.973 to 3.160	3.870 to 4.729	5.407 to 6.657
95.	APR2851	1.855 to 3.122	3.828 to 4.739	5.412 to 6.745
96.	APR2921	1.778 to 2.876	3.871 to 4.646	5.615 to 6.765
97.	APR2854	1.630 to 3.090	3.651 to 4.694	5.221 to 6.751
98.	APMT004	-0.8309 to 2.004	3.346 to 4.916	6.248 to 9.103
99.	Pop	1.924 to 2.947	3.561 to 4.319	4.897 to 5.992
100.	APMT007	-0.6485 to 1.471	3.037 to 4.214	5.866 to 7.814

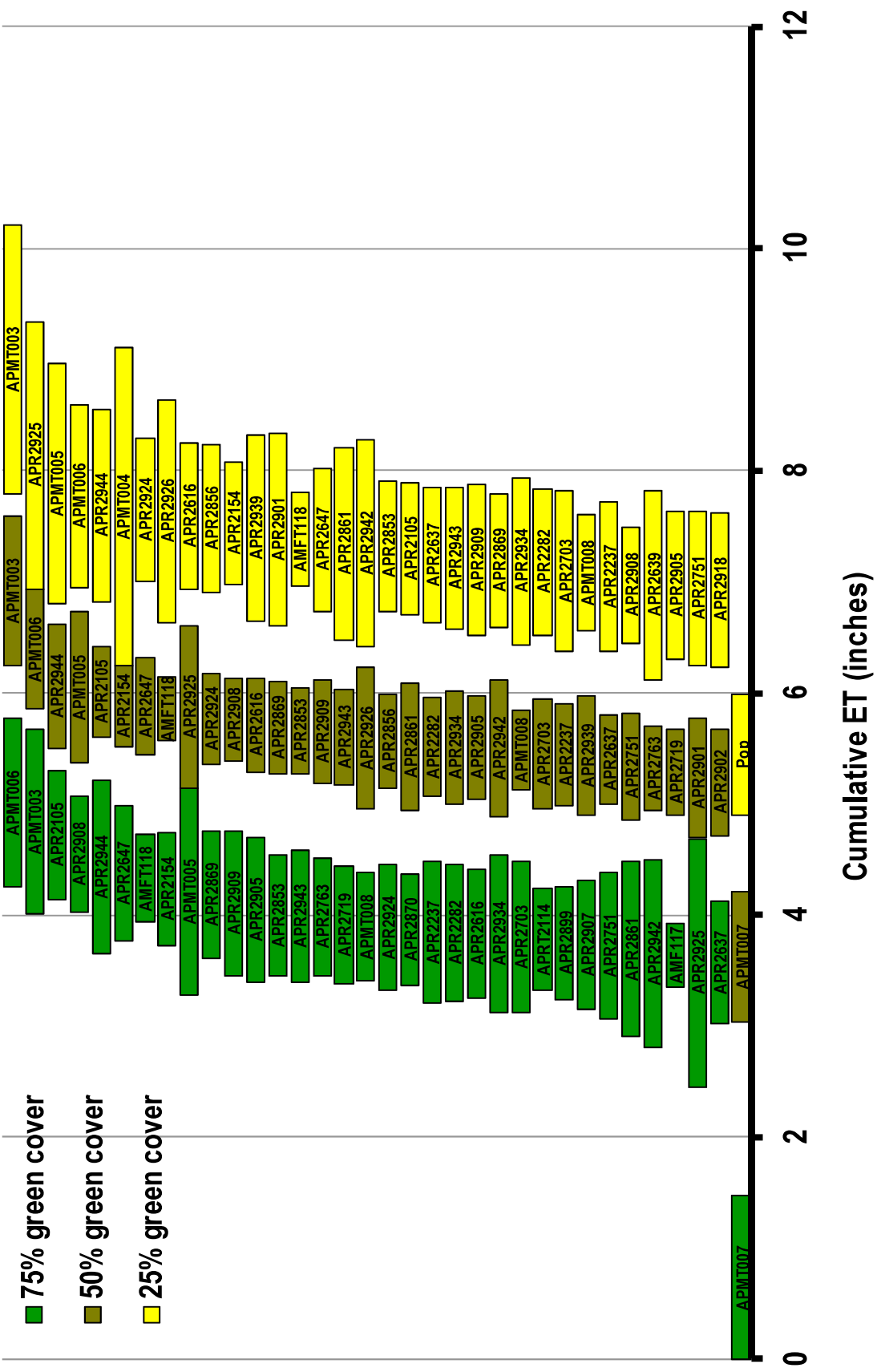
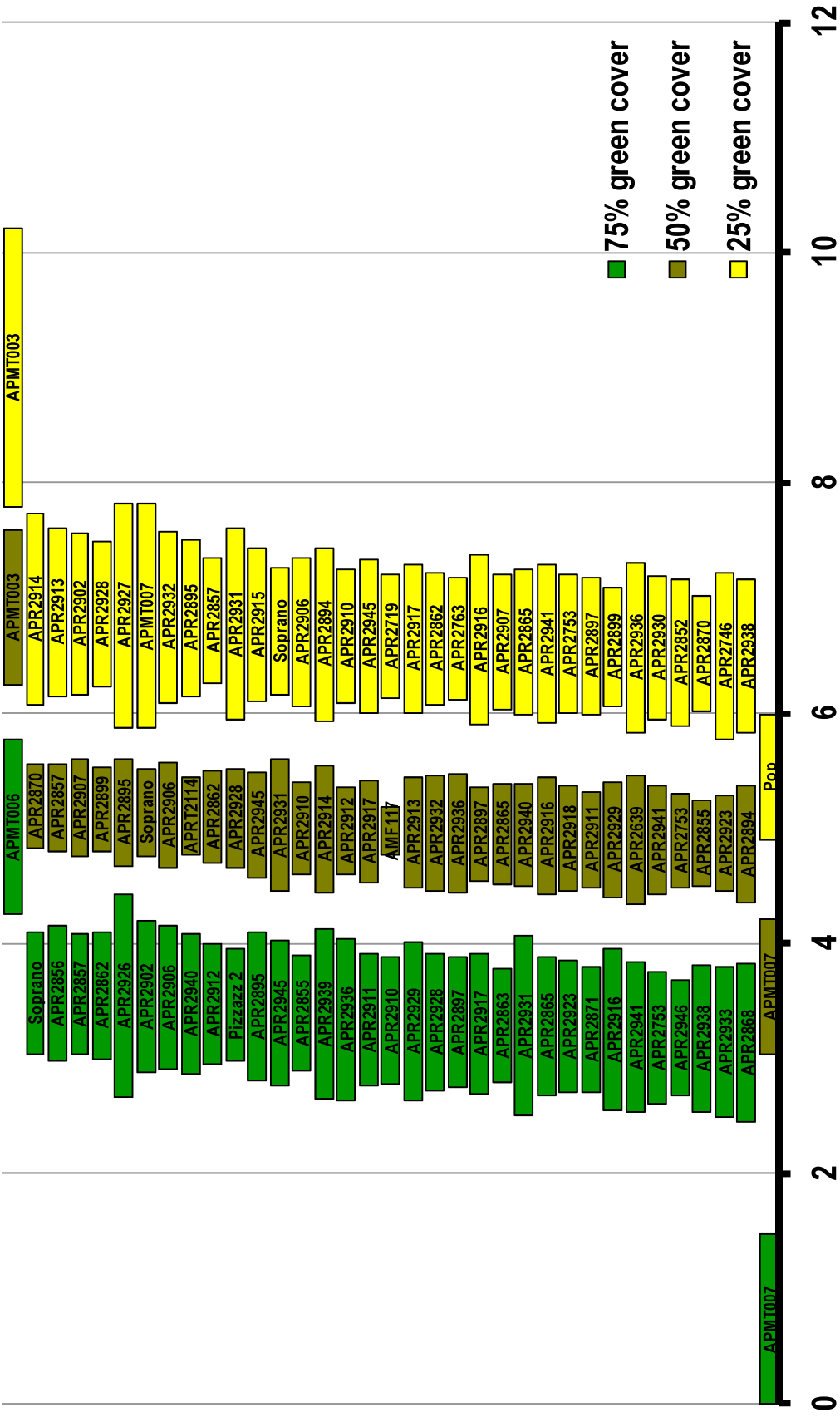


Figure 4. Confidence intervals (95%) for the moisture lost to evapotranspiration before the top-performing (top third) of 100 perennial ryegrass entries from data set 15ALP2 reach 75, 50, and 25% green cover. Both the top and bottom performing entries are included for reference.



Cumulative ET (inches)

Figure 5. Confidence intervals (95%) for the moisture lost to evapotranspiration before the middle-performing (middle third) of 100 perennial ryegrass entries from data set 15ALP2 reach 75, 50, and 25% green cover. Both the top and bottom performing entries are included for reference.

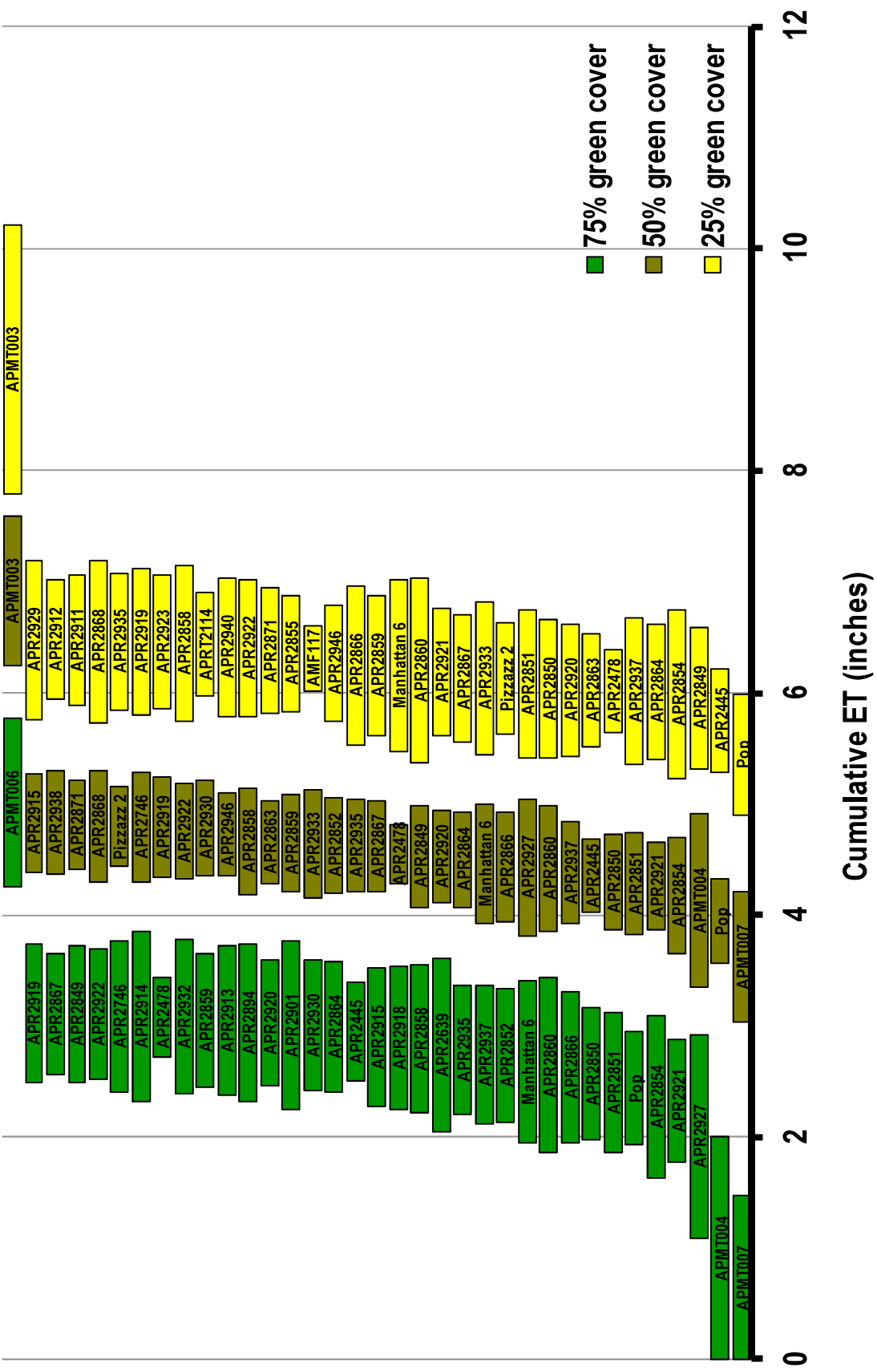


Figure 6. Confidence intervals (95%) for the moisture lost to evapotranspiration before the bottom-performing (bottom third) of 100 perennial ryegrass entries from data set 15ALP2 reach 75, 50, and 25% green cover. Both the top and bottom performing entries are included for reference.