

Table 2. Confidence intervals (95%) for the amount of moisture lost to evapotranspiration before 37 perennial ryegrass entries from data set 15ALP7 reach 75, 50, and 25% green cover. Entries are ranked based on their ET₅₀ values.

Rank	Selection	ET ₇₅	ET ₅₀	ET ₂₅
1.	APR2320	3.824 to 4.257	5.153 to 5.466	6.336 to 6.822
2.	APR2186	3.390 to 4.307	4.826 to 5.493	5.959 to 6.980
3.	APR2616	3.425 to 4.097	4.868 to 5.361	6.090 to 6.846
4.	APR2436	3.588 to 4.162	4.807 to 5.216	5.852 to 6.442
5.	APR2463	3.229 to 3.969	4.711 to 5.257	5.953 to 6.784
6.	APR2535	3.020 to 4.037	4.588 to 5.341	5.822 to 6.980
7.	APR2198	3.094 to 3.864	4.650 to 5.222	5.953 to 6.833
8.	APR2351	3.236 to 4.015	4.636 to 5.206	5.795 to 6.638
9.	APR2536	2.972 to 3.809	4.600 to 5.224	5.946 to 6.921
10.	APR2679	3.052 to 3.978	4.522 to 5.205	5.703 to 6.720
11.	APR2445	2.985 to 3.850	4.478 to 5.119	5.701 to 6.658
12.	APR2283	3.281 to 3.835	4.573 to 4.979	5.703 to 6.284
13.	APR2451	3.187 to 3.994	4.455 to 5.042	5.493 to 6.321
14.	APR2263	2.997 to 3.755	4.426 to 4.988	5.627 to 6.450
15.	APR2637	2.907 to 3.725	4.378 to 4.985	5.599 to 6.495
16.	APR2462	3.165 to 3.668	4.493 to 4.865	5.674 to 6.209
17.	APR2104	2.829 to 3.673	4.351 to 4.979	5.610 to 6.548
18.	APR2719	2.745 to 3.701	4.308 to 5.021	5.572 to 6.642
19.	APR2115	2.507 to 3.471	4.266 to 4.984	5.697 to 6.824
20.	APR2223	2.664 to 3.619	4.260 to 4.973	5.554 to 6.630
21.	APR2282	2.507 to 3.536	4.222 to 4.990	5.597 to 6.786
22.	APR2524	3.102 to 3.772	4.354 to 4.849	5.420 to 6.112
23.	APR2154	2.714 to 3.584	4.242 to 4.892	5.502 to 6.468
24.	APR2613	2.487 to 3.455	4.198 to 4.920	5.590 to 6.705
25.	APR2195	3.010 to 3.670	4.299 to 4.790	5.403 to 6.096
26.	Soprano	2.825 to 3.625	4.242 to 4.841	5.425 to 6.292
27.	Applaud II	2.864 to 3.608	4.222 to 4.779	5.368 to 6.164
28.	APR2609	2.753 to 3.760	4.107 to 4.862	5.178 to 6.247
29.	Protege GLR	2.574 to 3.288	4.106 to 4.642	5.419 to 6.214
30.	Penguin	2.425 to 3.380	3.959 to 4.677	5.203 to 6.262
31.	APR2450	2.493 to 3.443	3.920 to 4.640	5.073 to 6.112
32.	APR2612	2.170 to 3.218	3.790 to 4.574	5.083 to 6.255
33.	APR2149	2.246 to 3.149	3.815 to 4.492	5.106 to 6.113
34.	APR2448	1.669 to 3.281	3.501 to 4.686	4.803 to 6.620
35.	APR2790	2.288 to 3.219	3.719 to 4.429	4.878 to 5.911
36.	Pop	1.953 to 2.858	3.469 to 4.148	4.705 to 5.718
37.	APR2617	1.434 to 2.532	3.179 to 3.963	4.560 to 5.758

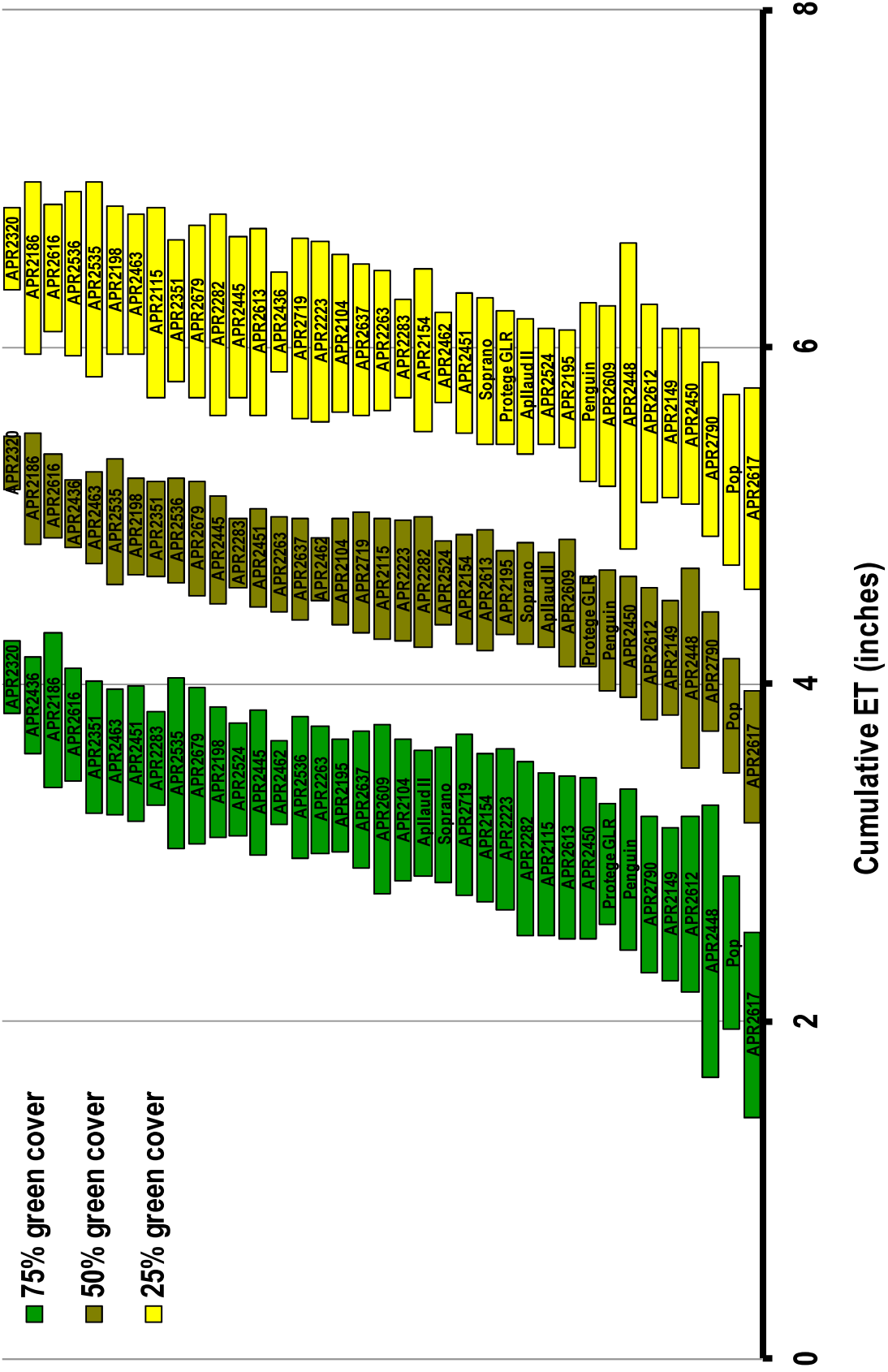


Figure 2. Confidence intervals (95%) for the moisture lost to evapotranspiration before the 37 perennial ryegrass entries from data set 15ALP7 reach 75, 50, and 25% green cover.