

**Table 2. Confidence intervals (95%) for the amount of moisture lost to evapotranspiration before 38 tall fescue entries from data set 11AFA1 reach 75, 50, and 25% green cover. Entries are ranked based on their ET<sub>50</sub> values.**

Rank	Selection	ET <sub>75</sub>	ET <sub>50</sub>	ET <sub>25</sub>
1.	ATF1485	7.383 to 8.243	11.76 to 12.52	15.69 to 17.24
2.	ATF1458	6.237 to 8.225	11.03 to 12.70	14.77 to 18.22
3.	ATF1434	7.424 to 8.264	11.51 to 12.20	15.17 to 16.55
4.	ATF1617	6.508 to 8.053	10.96 to 12.18	14.63 to 17.09
5.	ATF1730	6.892 to 8.036	10.92 to 11.77	14.39 to 16.07
6.	ATF1722R	6.787 to 7.381	10.98 to 11.42	14.88 to 15.75
7.	ATF1729	7.283 to 8.179	10.80 to 11.43	13.90 to 15.08
8.	ATF1738	5.632 to 8.096	10.16 to 11.96	13.49 to 17.01
9.	ATF1616	6.426 to 7.669	10.60 to 11.50	14.18 to 15.92
10.	ATF1426	6.069 to 6.833	10.69 to 11.24	14.93 to 16.03
11.	ATF1739	6.221 to 7.365	10.48 to 11.30	14.21 to 15.78
12.	Falcon IV	6.619 to 7.413	10.41 to 10.95	13.85 to 14.85
13.	ATF1722S	6.259 to 7.481	10.18 to 11.01	13.55 to 15.08
14.	ATF1728	6.695 to 7.422	10.27 to 10.76	13.54 to 14.41
15.	ATF1402	5.848 to 7.259	9.988 to 10.95	13.50 to 15.26
16.	ATF1724R	6.438 to 7.461	10.13 to 10.81	13.38 to 14.60
17.	ATF1706	5.879 to 6.741	10.16 to 10.75	14.05 to 15.15
18.	ATF1736	6.332 to 7.541	9.939 to 10.74	13.05 to 14.44
19.	ATF1732	6.606 to 7.196	10.12 to 10.52	13.40 to 14.08
20.	ATF1707	6.489 to 7.273	10.05 to 10.57	13.29 to 14.19
21.	ATF1622	6.299 to 7.194	9.870 to 10.46	13.08 to 14.08
22.	ATF1492	6.078 to 7.003	9.819 to 10.43	13.18 to 14.24
23.	ATF1735	6.152 to 7.540	9.578 to 10.48	12.47 to 13.95
24.	ATF1701	6.715 to 7.361	9.745 to 10.16	12.54 to 13.20
25.	ATF1731	6.381 to 7.032	9.512 to 9.932	12.41 to 13.06
26.	ATF1703	6.055 to 6.755	9.343 to 9.796	12.38 to 13.09
27.	ATF1723S	5.122 to 7.167	8.803 to 10.12	11.74 to 13.82
28.	ATF1479	5.595 to 6.332	9.183 to 9.659	12.50 to 13.26
29.	ATF1734	5.766 to 6.573	9.146 to 9.667	12.24 to 13.05
30.	ATF1705	5.355 to 6.710	8.932 to 9.806	12.02 to 13.39
31.	ATF1733	5.475 to 6.625	8.892 to 9.634	11.91 to 13.04
32.	ATF1702	5.512 to 7.126	8.736 to 9.779	11.43 to 12.96
33.	ATF1737	5.918 to 6.459	9.072 to 9.422	12.04 to 12.57
34.	ATF1740	5.384 to 6.296	8.898 to 9.486	12.09 to 13.00
35.	ATF1723R	5.374 to 6.817	8.636 to 9.569	11.42 to 12.80
36.	ATF1704	5.441 to 6.458	8.597 to 9.257	11.43 to 12.38
37.	ATF1724S	5.271 to 6.452	7.708 to 8.502	9.835 to 10.86
38.	Crackle	4.576 to 5.317	6.968 to 7.478	9.171 to 9.827

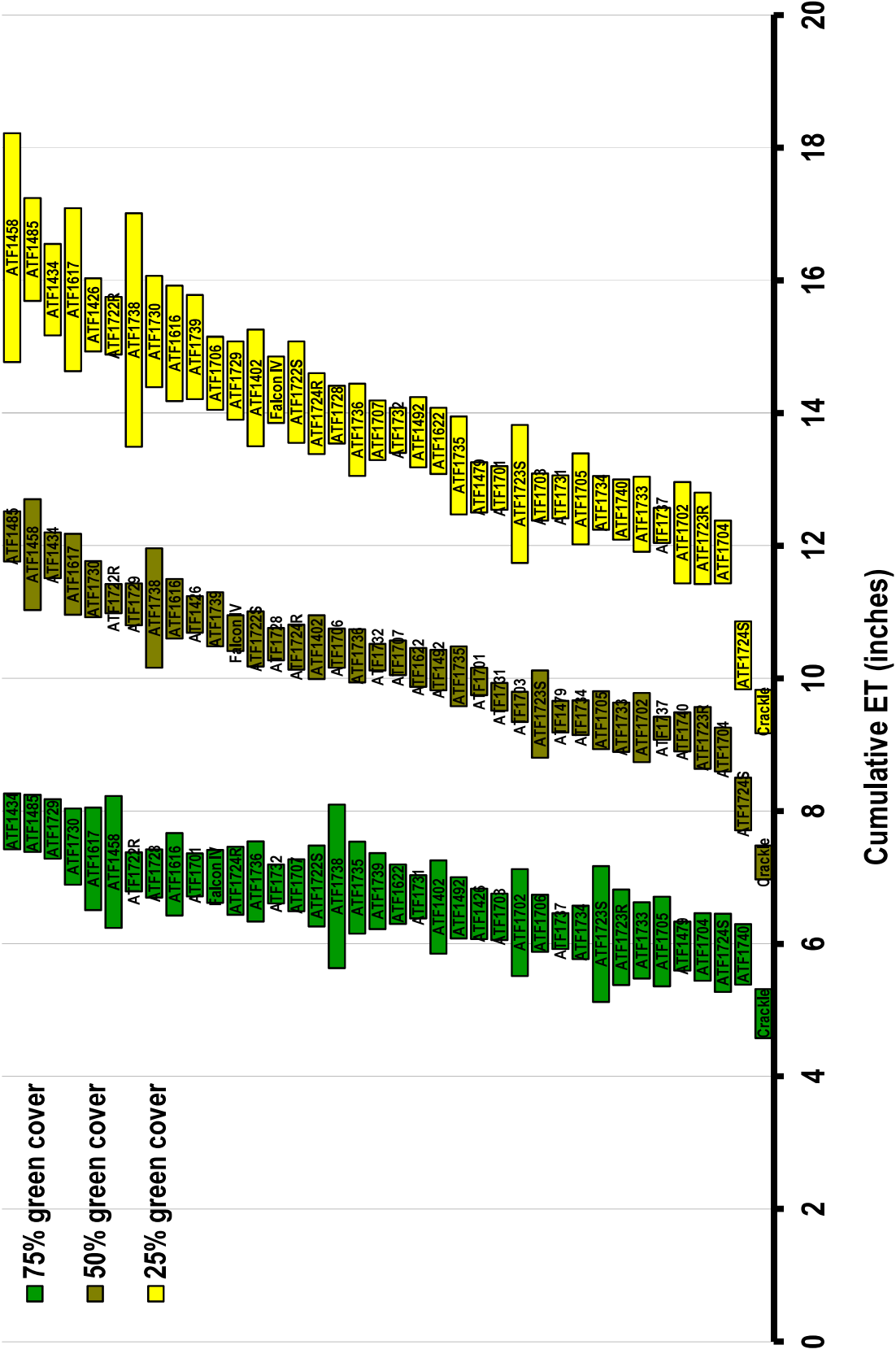


Figure 2. Confidence intervals (95%) for the moisture lost to evapotranspiration before 38 tall fescue entries from data set 11AFA1 reach 75, 50, and 25% green cover.