

Table 2. Confidence intervals (95%) for the amount of moisture lost to evapotranspiration before 51 tall fescue entries from data set 16AFA1 reach 75, 50, and 25% green cover. Entries are ranked based on their ET₅₀ values.

Rank	Selection	ET ₇₅	ET ₅₀	ET ₂₅
1.	ATF2026	7.384 to 10.86	13.14 to 15.69	17.22 to 22.19
2.	ATF1829	7.145 to 9.728	12.66 to 14.42	17.03 to 20.26
3.	ATF2013	8.205 to 9.749	12.89 to 13.92	16.94 to 18.73
4.	ATF1585	6.947 to 9.647	12.27 to 14.07	16.46 to 19.64
5.	ATF2014	7.543 to 9.930	12.25 to 13.82	16.02 to 18.65
6.	ATF1987	6.352 to 9.530	11.56 to 13.64	15.53 to 18.99
7.	ATF1992	5.209 to 9.455	11.15 to 13.92	15.34 to 20.14
8.	ATF2007	5.844 to 9.012	11.43 to 13.49	15.74 to 19.25
9.	ATF2028	7.318 to 9.346	11.53 to 12.86	15.06 to 17.06
10.	ATF2008	6.408 to 8.490	11.23 to 12.58	15.31 to 17.42
11.	ATF2010	6.829 to 8.320	11.16 to 12.13	15.00 to 16.44
12.	ATF1617	5.482 to 8.474	10.67 to 12.59	14.79 to 17.79
13.	ATF1989	6.590 to 8.124	10.95 to 11.95	14.81 to 16.28
14.	ATF2017	6.356 to 8.438	10.71 to 12.07	14.40 to 16.37
15.	ATF2025	6.658 to 8.229	10.68 to 11.71	14.23 to 15.68
16.	ATF1991	6.339 to 7.801	10.68 to 11.63	14.56 to 15.94
17.	ATF1986	5.999 to 8.699	10.18 to 11.95	13.54 to 16.02
18.	ATF2011	5.546 to 7.708	10.28 to 11.68	14.31 to 16.36
19.	ATF2021	3.804 to 8.096	9.618 to 12.33	13.89 to 18.10
20.	Penn RK4	6.393 to 8.079	10.32 to 11.43	13.75 to 15.28
21.	2nd Millenium	6.307 to 8.119	10.28 to 11.47	13.71 to 15.36
22.	Cochise IV	6.350 to 7.994	10.27 to 11.35	13.70 to 15.19
23.	ATF2015	6.156 to 8.068	10.17 to 11.43	13.61 to 15.35
24.	Rebel V	5.033 to 8.504	9.661 to 11.92	13.21 to 16.42
25.	Aquavita	5.546 to 7.969	9.887 to 11.47	13.49 to 15.71
26.	ATF1587	6.105 to 7.583	10.20 to 11.17	13.84 to 15.19
27.	ATF1994	5.382 to 7.899	9.711 to 11.36	13.28 to 15.58
28.	ATF2024	6.009 to 7.389	10.03 to 10.94	13.64 to 14.89
29.	Rebel Xtreme	5.701 to 7.883	9.599 to 11.05	12.88 to 14.83
30.	ATF2009	5.160 to 6.934	9.725 to 10.87	13.74 to 15.36
31.	ATF1990	4.678 to 7.339	9.434 to 11.16	13.36 to 15.80
32.	ATF1901	5.950 to 7.188	9.776 to 10.60	13.25 to 14.36
33.	ATF1376	5.394 to 7.361	9.449 to 10.75	12.94 to 14.70
34.	ATF2019	5.396 to 7.223	9.421 to 10.63	12.92 to 14.56
35.	ATF2023	5.411 to 7.117	9.391 to 10.52	12.89 to 14.41
36.	ATF1745	4.989 to 6.201	9.564 to 10.35	13.77 to 14.87
37.	ATF1786	5.621 to 7.037	9.403 to 10.35	12.79 to 14.05
38.	ATF2020	5.084 to 7.023	9.231 to 10.51	12.82 to 14.56
39.	ATF1902	3.962 to 7.214	8.816 to 10.92	12.68 to 15.62

40.	ATF2012	5.715 to 6.974	9.423 to 10.27	12.78 to 13.90
41.	ATF1993	5.677 to 6.900	9.274 to 10.10	12.54 to 13.62
42.	ATF1985	5.537 to 6.820	9.172 to 10.04	12.46 to 13.60
43.	ATF2022	5.436 to 6.823	9.126 to 10.06	12.44 to 13.67
44.	Crackle	5.089 to 6.987	8.951 to 10.22	12.29 to 13.98
45.	ATF2016	5.554 to 6.848	9.031 to 9.908	12.16 to 13.31
46.	ATF1984	5.234 to 6.723	8.899 to 9.903	12.16 to 13.48
47.	ATF1988	5.594 to 6.600	8.998 to 9.681	12.13 to 13.03
48.	ATF2027	5.464 to 6.558	8.834 to 9.579	11.92 to 12.89
49.	ATF1552	5.098 to 6.569	8.685 to 9.682	11.88 to 13.19
50.	ATF2018	4.432 to 6.054	8.394 to 9.480	11.91 to 13.35
51.	KY-31	4.033 to 5.677	7.985 to 9.087	11.49 to 12.94

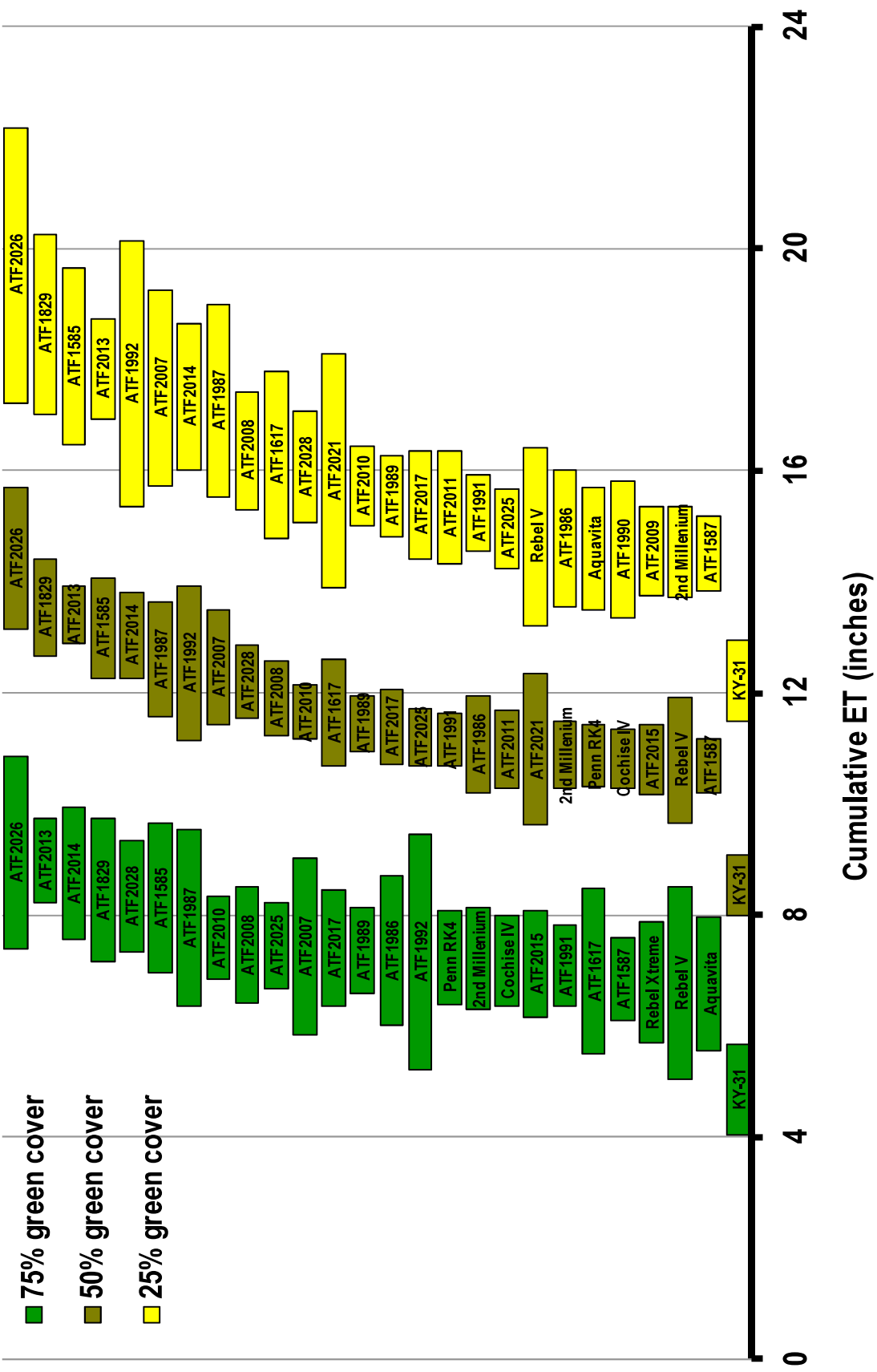


Figure 3. Confidence intervals (95%) for the moisture lost to evapotranspiration before the top-performing (top half) of 51 tall fescue entries from data set 16AFA1 reach 75, 50, and 25% green cover. Both the top and bottom performing entries are included for reference.