

Table 2. Confidence intervals (95%) for the amount of moisture lost to evapotranspiration before 61 tall fescue entries from data set 17AFA1 reach 75, 50, and 25% green cover. Entries are ranked based on their ET₅₀ values.

Rank	Selection	ET ₇₅	ET ₅₀	ET ₂₅
1.	ATF2039	5.901 to 6.870	9.049 to 9.693	11.86 to 12.85
2.	ATF1467	5.127 to 6.856	8.785 to 9.947	11.80 to 13.68
3.	ATF2040	5.456 to 6.730	8.863 to 9.715	11.81 to 13.16
4.	ATF1612	5.750 to 6.989	8.843 to 9.667	11.52 to 12.76
5.	ATF2090	5.575 to 6.579	8.907 to 9.579	11.88 to 12.93
6.	ATF2095	5.834 to 6.787	8.916 to 9.550	11.68 to 12.63
7.	ATF2038	5.109 to 6.358	8.782 to 9.621	11.99 to 13.35
8.	ATF2089	5.771 to 6.741	8.859 to 9.505	11.62 to 12.59
9.	ATF2094	5.466 to 6.558	8.807 to 9.537	11.77 to 12.90
10.	ATF1376	5.320 to 6.484	8.778 to 9.558	11.82 to 13.05
11.	ATF2037	5.195 to 6.309	8.774 to 9.521	11.95 to 13.14
12.	ATF2047	5.227 to 6.294	8.787 to 9.502	11.96 to 13.10
13.	ATF2096	5.293 to 6.435	8.727 to 9.491	11.76 to 12.95
14.	ATF2042	4.910 to 6.459	8.566 to 9.604	11.66 to 13.31
15.	ATF1426	4.811 to 6.167	8.547 to 9.454	11.79 to 13.24
16.	ATF2091	5.414 to 6.558	8.588 to 9.353	11.39 to 12.53
17.	ATF2048	4.919 to 6.310	8.502 to 9.432	11.59 to 13.05
18.	ATF2059	5.296 to 6.762	8.475 to 9.454	11.18 to 12.62
19.	ATF2058	5.094 to 6.651	8.443 to 9.485	11.27 to 12.84
20.	ATF1822	5.319 to 6.558	8.536 to 9.365	11.35 to 12.58
21.	KY-31	4.851 to 6.027	8.495 to 9.282	11.72 to 12.96
22.	ATF1492	5.474 to 6.283	8.609 to 9.151	11.48 to 12.28
23.	ATF2035	5.434 to 6.441	8.470 to 9.145	11.19 to 12.17
24.	ATF2054	4.989 to 6.523	8.283 to 9.312	11.08 to 12.60
25.	ATF1832	4.865 to 6.009	8.381 to 9.147	11.50 to 12.68
26.	ATF2046	4.934 to 6.220	8.316 to 9.178	11.27 to 12.56
27.	ATF2034	5.506 to 6.359	8.444 to 9.018	11.12 to 11.94
28.	ATF1768	5.410 to 6.350	8.405 to 9.037	11.11 to 12.01
29.	ATF2115	4.998 to 6.111	8.319 to 9.066	11.27 to 12.39
30.	ATF2088	5.107 to 6.329	8.239 to 9.061	10.99 to 12.18
31.	ATF2060	4.967 to 5.865	8.308 to 8.911	11.35 to 12.25
32.	ATF1835	5.622 to 6.551	8.258 to 8.889	10.63 to 11.49
33.	ATF2043	4.930 to 6.031	8.171 to 8.912	11.06 to 12.14
34.	ATF2044	4.911 to 5.843	8.220 to 8.847	11.23 to 12.15
35.	ATF2041	4.729 to 5.743	8.131 to 8.811	11.20 to 12.21
36.	ATF2092	4.852 to 5.733	8.111 to 8.705	11.09 to 11.96
37.	ATF2087	4.985 to 5.987	8.064 to 8.742	10.84 to 11.80
38.	ATF2057	5.045 to 5.914	8.084 to 8.673	10.86 to 11.69
39.	ATF1787	4.445 to 5.911	7.882 to 8.867	10.85 to 12.30

40.	ATF2093	4.613 to 5.951	7.884 to 8.789	10.74 to 12.04
41.	ATF1914	5.021 to 5.974	7.959 to 8.608	10.62 to 11.52
42.	ATF2056	4.781 to 5.932	7.867 to 8.649	10.61 to 11.71
43.	ATF1880	4.509 to 5.500	7.878 to 8.546	10.93 to 11.91
44.	ATF2045	4.883 to 5.787	7.882 to 8.498	10.62 to 11.48
45.	NT-3	4.934 to 6.130	7.756 to 8.578	10.24 to 11.36
46.	ATF2036	4.702 to 5.610	7.795 to 8.414	10.62 to 11.49
47.	ATF1809	4.869 to 5.843	7.763 to 8.431	10.38 to 11.30
48.	ATF1839	4.699 to 5.655	7.732 to 8.385	10.48 to 11.39
49.	ATF1829	4.751 to 5.631	7.733 to 8.336	10.46 to 11.30
50.	ATF2055	4.753 to 6.064	7.562 to 8.469	10.01 to 11.23
51.	ATF1254	4.895 to 5.913	7.656 to 8.360	10.14 to 11.09
52.	Traverse	4.645 to 5.591	7.634 to 8.283	10.35 to 11.25
53.	ATF1881	4.846 to 5.680	7.651 to 8.228	10.22 to 11.01
54.	ATF1820	4.731 to 5.921	7.443 to 8.274	9.836 to 10.95
55.	ATF2116	4.633 to 5.609	7.492 to 8.168	10.08 to 11.00
56.	Regenerate	4.329 to 5.539	7.394 to 8.226	10.11 to 11.26
57.	ATF2053	3.969 to 5.220	7.272 to 8.124	10.20 to 11.40
58.	U45	4.712 to 5.504	7.359 to 7.916	9.796 to 10.54
59.	ATF1885	2.785 to 4.701	6.401 to 7.693	9.436 to 11.27
60.	ATF1885	2.785 to 4.701	6.401 to 7.693	9.436 to 11.27
61.	Crackle	3.621 to 4.767	6.616 to 7.416	9.292 to 10.39

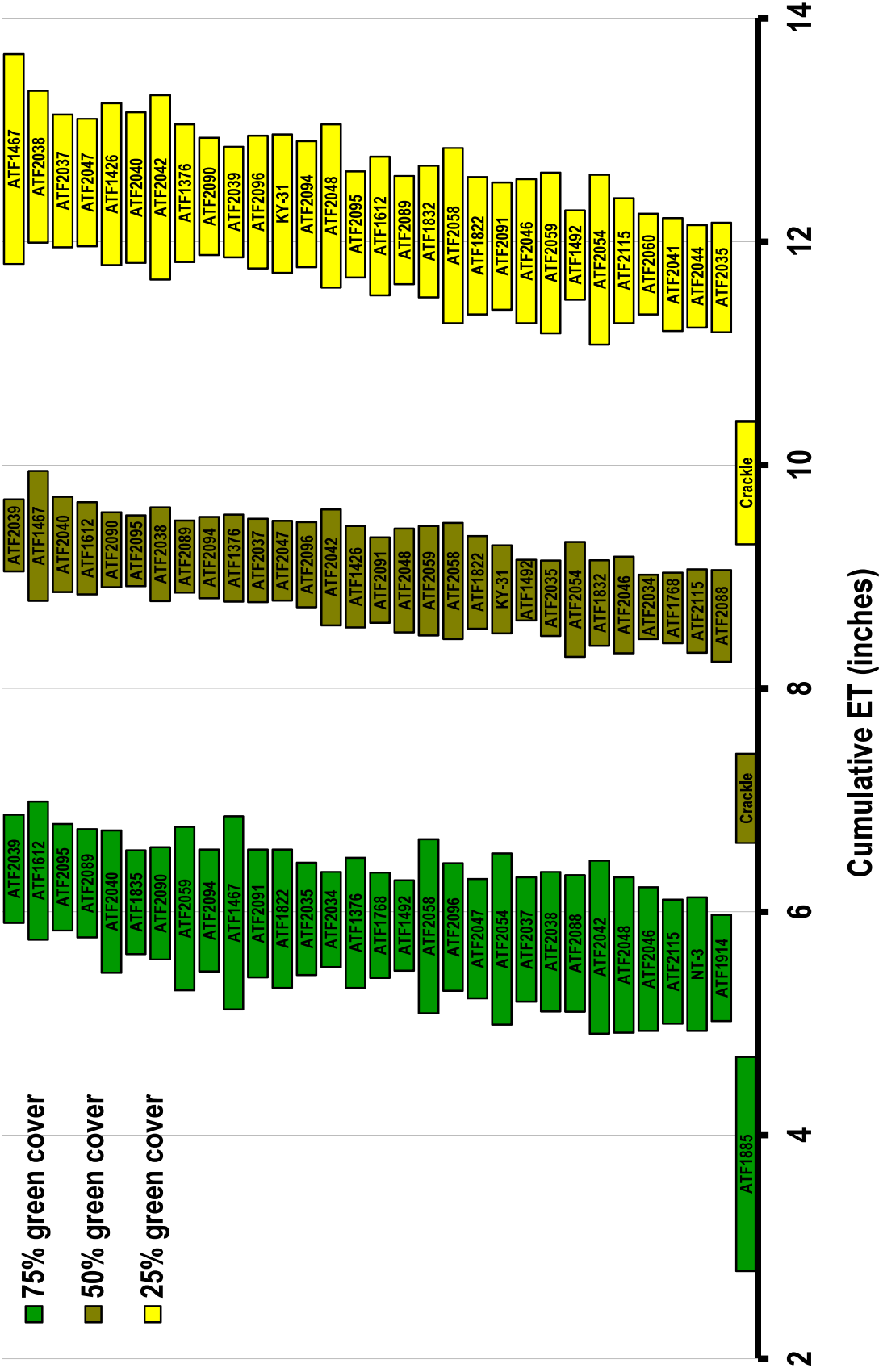


Figure 3. Confidence intervals (95%) for the moisture lost to evapotranspiration before the top-performing (top half) of 61 tall fescue entries from data set 17AFA1 reach 75, 50, and 25% green cover. Both the top and bottom performing entries are included for reference.

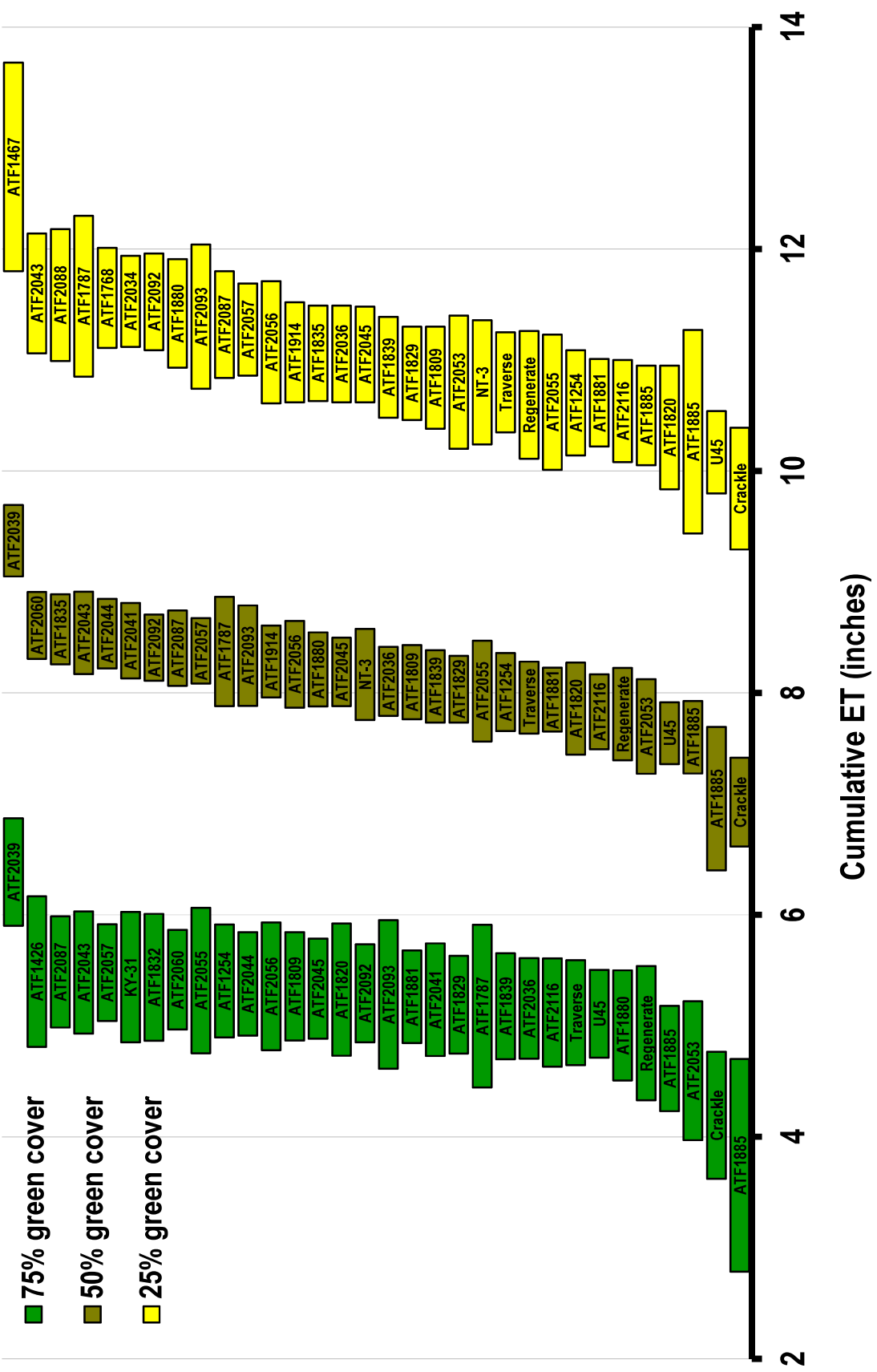


Figure 4. Confidence intervals (95%) for the moisture lost to evapotranspiration before the bottom-performing (bottom half) of 61 tall fescue entries from data set 17AFA1 reach 75, 50, and 25% green cover. Both the top and bottom performing entries are included for reference.