

Table 2. Confidence intervals (95%) for the amount of moisture lost to evapotranspiration before 59 tall fescue entries from data set 18AFA1 reach 75, 50, and 25% green cover. Entries are ranked based on their ET₅₀ values.

Rank	Selection	ET ₇₅	ET ₅₀	ET ₂₅
1.	ATF1572	7.400 to 8.262	9.798 to 10.38	11.90 to 12.80
2.	ATF2045	7.308 to 7.988	9.796 to 10.26	12.05 to 12.77
3.	ATF2092	7.202 to 7.656	9.788 to 10.10	12.22 to 12.71
4.	Penn ATF1254	7.496 to 8.103	9.722 to 10.13	11.75 to 12.36
5.	ATF2091	7.734 to 8.193	9.766 to 10.07	11.65 to 12.10
6.	ATF2042	7.297 to 8.062	9.637 to 10.15	11.72 to 12.50
7.	Penn ATF1376	7.421 to 8.071	9.626 to 10.06	11.62 to 12.26
8.	ATF2115	7.397 to 7.839	9.665 to 9.963	11.79 to 12.23
9.	ATF2038	7.179 to 7.673	9.539 to 9.875	11.74 to 12.24
10.	ATF1768	7.288 to 7.902	9.466 to 9.878	11.45 to 12.05
11.	ATF2089	6.988 to 7.647	9.435 to 9.885	11.67 to 12.34
12.	ATF2090	6.972 to 7.615	9.414 to 9.853	11.65 to 12.30
13.	Rebel Xtreme	7.026 to 7.654	9.395 to 9.821	11.56 to 12.19
14.	KY-31 E+	6.937 to 7.651	9.295 to 9.781	11.43 to 12.14
15.	ATF2096	6.972 to 7.478	9.355 to 9.700	11.58 to 12.08
16.	ATF2094	6.952 to 7.908	9.142 to 9.786	11.04 to 11.95
17.	ATF1880	6.968 to 7.399	9.308 to 9.602	11.51 to 11.94
18.	ATF2035	6.918 to 7.385	9.228 to 9.547	11.40 to 11.85
19.	ATF2039	6.991 to 7.533	9.161 to 9.528	11.17 to 11.68
20.	ATF2005	6.846 to 7.287	9.187 to 9.489	11.39 to 11.83
21.	ATF2000	6.330 to 7.353	8.975 to 9.683	11.30 to 12.34
22.	ATF2036	6.512 to 7.593	8.932 to 9.672	11.02 to 12.08
23.	ATF2037	6.765 to 7.285	9.114 to 9.471	11.31 to 11.81
24.	ATF2095	6.836 to 7.449	9.070 to 9.487	11.12 to 11.71
25.	ATF2003	6.479 to 7.019	9.062 to 9.437	11.48 to 12.02
26.	ATF2006	6.756 to 7.264	9.077 to 9.424	11.24 to 11.74
27.	ATF2047	6.586 to 7.339	8.980 to 9.497	11.15 to 11.88
28.	ATF2004	6.661 to 7.153	9.048 to 9.386	11.29 to 11.77
29.	ATF2002	6.749 to 7.149	9.053 to 9.327	11.24 to 11.62
30.	Penn ATF1258	6.850 to 7.340	8.973 to 9.307	10.96 to 11.41
31.	ATF2048	6.519 to 7.181	8.902 to 9.357	11.09 to 11.73
32.	ATF1999	6.414 to 6.973	8.907 to 9.295	11.23 to 11.79
33.	ATF1885	6.493 to 7.225	8.819 to 9.323	10.93 to 11.63
34.	ATF2001	6.259 to 6.934	8.817 to 9.286	11.17 to 11.84
35.	ATF2088	6.041 to 7.264	8.618 to 9.467	10.83 to 12.04
36.	ATF1839	6.768 to 7.232	8.869 to 9.187	10.84 to 11.27
37.	Penn RK4	6.393 to 7.309	8.696 to 9.327	10.74 to 11.61
38.	ATF1914	6.263 to 7.326	8.643 to 9.376	10.71 to 11.73
39.	ATF2040	6.259 to 7.187	8.683 to 9.325	10.84 to 11.74

40.	ATF1996	6.374 to 7.235	8.705 to 9.299	10.79 to 11.61
41.	Rebel V	6.372 to 7.114	8.708 to 9.221	10.83 to 11.54
42.	ATF2041	6.294 to 6.672	8.823 to 9.088	11.24 to 11.62
43.	ATF2116	6.525 to 7.229	8.707 to 9.191	10.69 to 11.35
44.	ATF1995	6.147 to 6.813	8.647 to 9.112	10.95 to 11.61
45.	Rebel XLR	6.623 to 7.055	8.708 to 9.006	10.67 to 11.08
46.	ATF1998	6.327 to 6.907	8.640 to 9.044	10.79 to 11.34
47.	ATF2087	6.371 to 6.810	8.595 to 8.901	10.70 to 11.11
48.	ATF2043	6.284 to 6.783	8.560 to 8.908	10.70 to 11.17
49.	NT-3	6.045 to 7.029	8.371 to 9.057	10.42 to 11.36
50.	ATF2034	6.150 to 6.816	8.481 to 8.946	10.63 to 11.26
51.	ATF2044	6.199 to 6.779	8.508 to 8.914	10.66 to 11.21
52.	Vert(ATF1612)	6.173 to 6.777	8.318 to 8.741	10.30 to 10.87
53.	ATF2046	5.388 to 6.756	8.013 to 8.983	10.25 to 11.60
54.	ATF1997	5.974 to 6.647	8.214 to 8.688	10.27 to 10.91
55.	Crackle	5.453 to 6.260	8.147 to 8.722	10.61 to 11.42
56.	ATF2093	5.623 to 6.501	7.984 to 8.610	10.11 to 10.96
57.	BBS	5.810 to 6.306	7.824 to 8.181	9.712 to 10.18
58.	Justice	5.656 to 6.176	7.459 to 7.839	9.134 to 9.630
59.	TD2	4.806 to 5.375	6.423 to 6.865	7.898 to 8.496

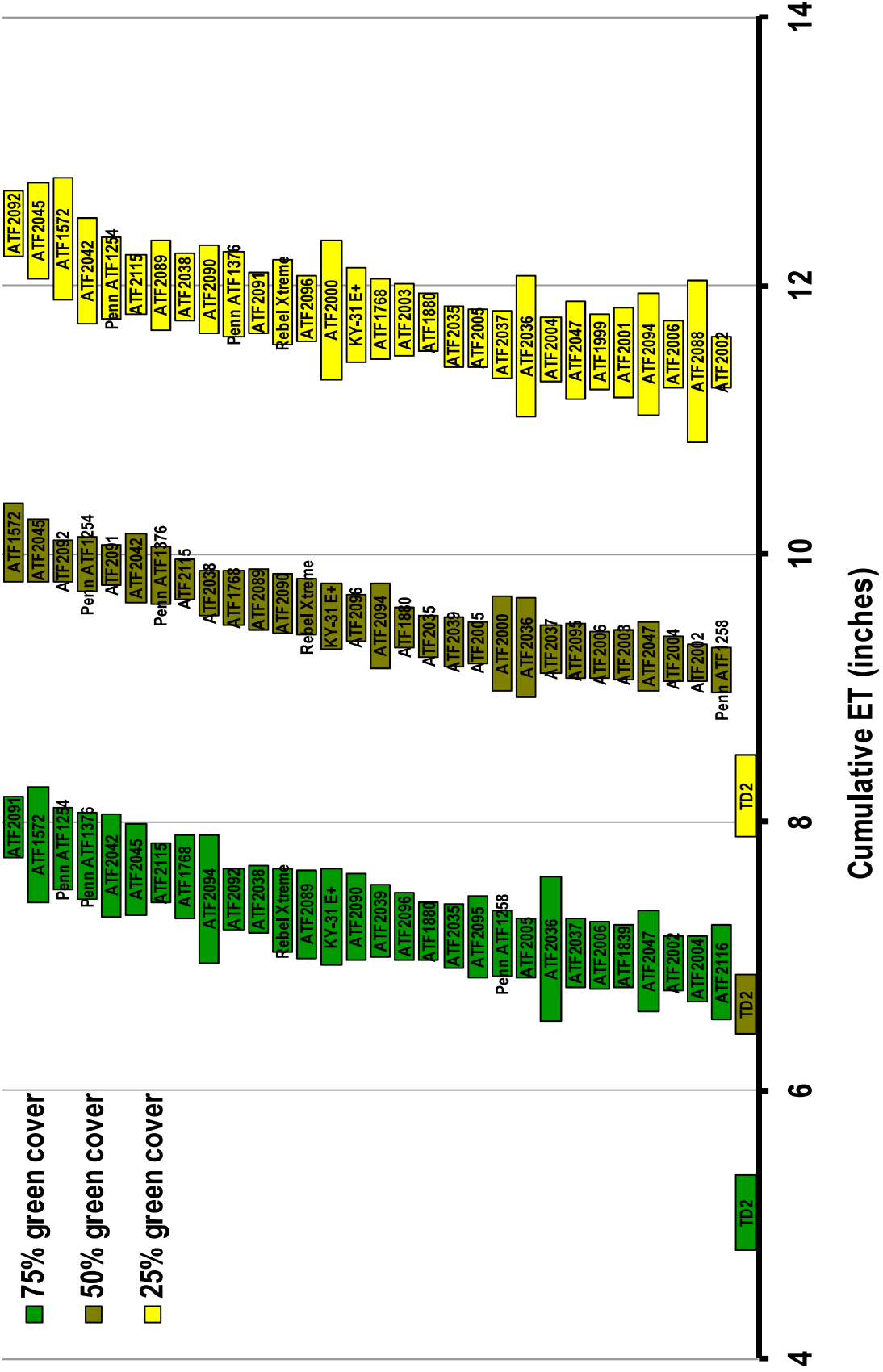


Figure 3. Confidence intervals (95%) for the moisture lost to evapotranspiration before the top-performing (top half) of 59 tall fescue entries from data set 18AFA1 reach 75, 50, and 25% green cover. Both the top and bottom performing entries are included for reference.

