

Table 2. Confidence intervals (95%) for the amount of moisture lost to evapotranspiration after irrigation is withheld before selections from data set 08ALP1 reach 75, 50, and 25% green cover. Selections are ranked based on their ET₅₀ values.

Rank	Selection	ET ₇₅	ET ₅₀	ET ₂₅
1.	APR2201	5.015 to 7.339	7.636 to 9.170	9.036 to 12.23
2.	APR2208	4.929 to 6.898	7.540 to 8.785	9.184 to 11.64
3.	APR2212	5.344 to 6.921	7.455 to 8.356	8.902 to 10.46
4.	APR2244	6.154 to 7.098	7.587 to 8.097	8.698 to 9.420
5.	APR2225	6.372 to 7.299	7.586 to 8.085	8.518 to 9.154
6.	APR2270	6.139 to 7.520	7.367 to 8.127	8.224 to 9.109
7.	APR2129	5.244 to 7.126	7.202 to 8.256	8.476 to 10.08
8.	APR2280	5.356 to 6.741	7.279 to 8.066	8.705 to 9.902
9.	APR2106	5.297 to 6.672	7.221 to 8.007	8.665 to 9.836
10.	APR2145	5.812 to 6.845	7.316 to 7.897	8.509 to 9.264
11.	Phenom	5.168 to 6.585	7.196 to 8.014	8.716 to 9.967
12.	APR2166	5.678 to 7.363	7.101 to 8.061	8.088 to 9.199
13.	APR2152	4.366 to 6.649	6.818 to 8.170	8.414 to 10.55
14.	APR2199	5.358 to 6.625	7.065 to 7.800	8.398 to 9.356
15.	APR2149	4.275 to 6.009	6.882 to 7.931	8.810 to 10.54
16.	APR2186	5.490 to 6.749	7.028 to 7.766	8.237 to 9.127
17.	APR2154	4.922 to 7.037	6.773 to 8.014	8.036 to 9.615
18.	APR2263	4.714 to 6.270	6.895 to 7.818	8.545 to 9.904
19.	Applaud II	5.916 to 6.861	7.068 to 7.643	8.026 to 8.622
20.	APR2189	5.803 to 6.847	7.037 to 7.667	8.044 to 8.714
21.	APR2127	5.448 to 6.852	6.929 to 7.764	8.070 to 9.027
22.	APR2272	3.928 to 6.003	6.699 to 7.961	8.655 to 10.74
23.	APR2153	4.955 to 6.468	6.874 to 7.768	8.334 to 9.536
24.	APR2223	4.221 to 6.140	6.692 to 7.848	8.477 to 10.24
25.	APR2146	5.411 to 6.747	6.854 to 7.663	7.985 to 8.890
26.	APR2132	5.426 to 6.628	6.882 to 7.609	8.053 to 8.876
27.	APR2185	5.114 to 6.508	6.829 to 7.662	8.169 to 9.198
28.	APR2257	4.485 to 5.974	6.761 to 7.658	8.533 to 9.846
29.	APR2105	5.145 to 6.491	6.765 to 7.581	8.048 to 9.012
30.	APR2139	5.667 to 6.781	6.810 to 7.522	7.747 to 8.474
31.	APR2237	5.369 to 6.688	6.749 to 7.567	7.845 to 8.732
32.	APR2174	5.207 to 6.665	6.614 to 7.534	7.726 to 8.725
33.	APR2282	4.782 to 6.348	6.580 to 7.541	7.973 to 9.142
34.	APR2192	4.992 to 6.361	6.629 to 7.475	7.935 to 8.921
35.	1GSquared	4.153 to 6.376	6.355 to 7.715	7.906 to 9.707
36.	APR2158	4.808 to 6.486	6.515 to 7.554	7.816 to 9.032
37.	APR2144	4.310 to 6.101	6.475 to 7.571	8.107 to 9.575
38.	APR2240	4.354 to 6.757	6.280 to 7.766	7.602 to 9.381
39.	APR2229	4.680 to 5.961	6.623 to 7.409	8.206 to 9.219
40.	APR2273	5.398 to 6.633	6.608 to 7.414	7.587 to 8.430
41.	APR2236	4.466 to 6.920	6.225 to 7.767	7.439 to 9.190
42.	APR2190	4.569 to 6.398	6.409 to 7.546	7.792 to 9.156
43.	APR2202	5.073 to 6.180	6.629 to 7.324	7.929 to 8.725
44.	APR2104	4.659 to 5.956	6.557 to 7.360	8.106 to 9.116
45.	APR2107	4.491 to 5.943	6.470 to 7.371	8.053 to 9.198

46.	APR2136	5.270 to 6.356	6.516 to 7.233	7.556 to 8.322
47.	APR2205	4.205 to 5.981	6.319 to 7.425	7.938 to 9.367
48.	APR2213	4.804 to 6.140	6.424 to 7.277	7.742 to 8.719
49.	APR2128	4.155 to 6.546	6.080 to 7.600	7.450 to 9.253
50.	APR2173	4.213 to 6.370	6.127 to 7.497	7.519 to 9.148
51.	APR2188	5.070 to 6.384	6.376 to 7.248	7.427 to 8.366
52.	APR2271	4.534 to 5.827	6.404 to 7.220	7.944 to 8.946
53.	APR2116	4.899 to 6.328	6.342 to 7.277	7.503 to 8.529
54.	APR2037	4.496 to 5.999	6.286 to 7.247	7.717 to 8.854
55.	APR2168	4.280 to 5.981	6.208 to 7.292	7.721 to 9.041
56.	APR2122	4.154 to 5.921	6.187 to 7.307	7.759 to 9.153
57.	APR2216	3.699 to 5.733	6.112 to 7.382	7.915 to 9.643
58.	APR2193	3.835 to 5.604	6.183 to 7.290	8.006 to 9.502
59.	APR2198	2.041 to 6.482	5.366 to 8.104	7.145 to 11.27
60.	APR2220	4.291 to 6.169	6.131 to 7.337	7.527 to 8.947
61.	APR2135	3.753 to 6.127	5.969 to 7.472	7.549 to 9.457
62.	APR2167	4.733 to 6.062	6.283 to 7.152	7.549 to 8.527
63.	APR2133	4.678 to 5.994	6.279 to 7.137	7.592 to 8.567
64.	APR2221	4.131 to 5.974	6.104 to 7.284	7.617 to 9.054
65.	APR2182	4.878 to 6.102	6.260 to 7.078	7.401 to 8.303
66.	APR2175	4.444 to 6.088	6.128 to 7.203	7.451 to 8.682
67.	APR2159	4.262 to 5.933	6.121 to 7.201	7.580 to 8.865
68.	APR2235	4.113 to 5.867	6.095 to 7.220	7.638 to 9.013
69.	APR2269	4.734 to 6.087	6.206 to 7.105	7.409 to 8.411
70.	APR2224	5.208 to 6.217	6.265 to 6.975	7.134 to 7.930
71.	APR2267	4.523 to 5.747	6.216 to 7.017	7.637 to 8.570
72.	APR2241	4.792 to 5.844	6.256 to 6.957	7.505 to 8.291
73.	APR2215	3.302 to 5.768	5.819 to 7.375	7.615 to 9.702
74.	APR2125	4.566 to 5.962	6.114 to 7.046	7.378 to 8.429
75.	APR2265	4.182 to 6.316	5.835 to 7.266	7.046 to 8.656
76.	APR2124	3.993 to 5.609	6.027 to 7.071	7.651 to 8.943
77.	APR2103	3.317 to 5.712	5.754 to 7.280	7.520 to 9.521
78.	APR2134	4.507 to 5.743	6.104 to 6.929	7.434 to 8.379
79.	APR2179	4.140 to 5.756	5.985 to 7.048	7.456 to 8.715
80.	APR2268	4.313 to 5.684	6.063 to 6.969	7.503 to 8.564
81.	APR2259	4.264 to 5.756	6.008 to 6.998	7.427 to 8.583
82.	APR2266	4.959 to 6.061	6.102 to 6.875	7.035 to 7.910
83.	APR2187	4.427 to 5.922	5.948 to 6.965	7.171 to 8.322
84.	APR2156	4.465 to 5.626	6.062 to 6.842	7.410 to 8.307
85.	APR2238	4.120 to 5.676	5.925 to 6.960	7.379 to 8.599
86.	APR2138	4.378 to 6.065	5.858 to 7.017	7.006 to 8.311
87.	APR2184	4.505 to 5.836	5.982 to 6.891	7.188 to 8.216
88.	APR2194	4.237 to 5.604	5.969 to 6.882	7.396 to 8.465
89.	APR2140	3.831 to 5.560	5.853 to 6.987	7.456 to 8.842
90.	APR2227	4.449 to 5.872	5.932 to 6.907	7.135 to 8.239
91.	APR2141	3.838 to 5.833	5.738 to 7.068	7.191 to 8.768
92.	APR2183	4.361 to 5.836	5.884 to 6.895	7.105 to 8.257
93.	APR2169	4.179 to 5.550	5.926 to 6.845	7.367 to 8.447
94.	APR2206	3.581 to 5.806	5.648 to 7.117	7.181 to 8.962
95.	APR2151	4.651 to 5.635	6.019 to 6.701	7.190 to 7.964

96.	RKS	4.700 to 5.838	5.959 to 6.758	6.996 to 7.904
97.	APR2283	4.609 to 5.744	5.960 to 6.749	7.088 to 7.984
98.	APR2281	3.837 to 5.568	5.775 to 6.926	7.306 to 8.691
99.	APR2228	4.153 to 5.428	5.908 to 6.766	7.378 to 8.390
100.	APR2115	3.915 to 5.564	5.782 to 6.886	7.280 to 8.596
101.	APR2123	4.637 to 5.846	5.875 to 6.731	6.882 to 7.864
102.	APR2195	4.671 to 5.806	5.899 to 6.702	6.897 to 7.820
103.	Integra II	3.667 to 5.608	5.647 to 6.944	7.183 to 8.748
104.	APR2277	4.332 to 5.348	5.943 to 6.637	7.336 to 8.144
105.	APR2276	3.813 to 5.283	5.799 to 6.775	7.430 to 8.622
106.	APR2131	4.298 to 5.549	5.846 to 6.710	7.134 to 8.131
107.	APR2264	4.192 to 5.433	5.807 to 6.661	7.159 to 8.155
108.	APR2121	3.401 to 5.468	5.546 to 6.916	7.182 to 8.873
109.	APR2222	4.143 to 5.473	5.770 to 6.686	7.114 to 8.182
110.	Manhattan II	3.943 to 5.400	5.732 to 6.722	7.198 to 8.372
111.	APR2178	3.507 to 5.349	5.614 to 6.836	7.270 to 8.777
112.	APR2191	4.260 to 5.765	5.683 to 6.746	6.814 to 8.040
113.	APR2180	3.775 to 5.224	5.721 to 6.693	7.324 to 8.504
114.	APR2207	4.012 to 5.238	5.786 to 6.619	7.284 to 8.276
115.	APR2279	3.413 to 5.180	5.578 to 6.749	7.302 to 8.761
116.	APR2217	4.276 to 5.313	5.798 to 6.522	7.104 to 7.948
117.	APR2143	3.798 to 5.266	5.618 to 6.623	7.114 to 8.315
118.	APR2262	2.412 to 4.788	5.370 to 6.860	7.584 to 9.677
119.	APR2260	3.850 to 5.270	5.618 to 6.596	7.073 to 8.238
120.	APR2239	3.568 to 5.165	5.561 to 6.639	7.177 to 8.493
121.	APR2275	3.880 to 5.408	5.500 to 6.577	6.797 to 8.071
122.	APR2197	3.919 to 5.294	5.551 to 6.518	6.892 to 8.036
123.	APR2137	3.895 to 5.221	5.560 to 6.489	6.939 to 8.043
124.	APR2214	3.991 to 5.078	5.635 to 6.396	7.044 to 7.950
125.	APR2261	4.027 to 5.223	5.579 to 6.427	6.879 to 7.884
126.	APR2242	3.862 to 5.096	5.556 to 6.419	6.980 to 8.012
127.	APR2203	2.719 to 5.322	5.082 to 6.821	6.793 to 8.976
128.	APR2148	3.441 to 5.146	5.360 to 6.536	6.888 to 8.316
129.	APR2181	3.718 to 5.064	5.461 to 6.403	6.904 to 8.038
130.	APR2130	3.652 to 5.308	5.339 to 6.512	6.669 to 8.075
131.	APR2248	3.387 to 4.870	5.400 to 6.411	7.060 to 8.305
132.	APR2226	3.789 to 5.174	5.369 to 6.364	6.653 to 7.849
133.	APR2258	3.302 to 4.933	5.300 to 6.420	6.916 to 8.292
134.	APR2196	3.471 to 4.818	5.321 to 6.261	6.862 to 8.013
135.	APR2278	2.410 to 4.159	5.237 to 6.344	7.541 to 9.052
136.	APR2126	3.430 to 5.069	5.205 to 6.366	6.615 to 8.028
137.	APR2219	3.171 to 4.797	5.228 to 6.342	6.899 to 8.278
138.	APR2102	3.152 to 4.982	5.140 to 6.409	6.701 to 8.262
139.	APR2172	3.221 to 4.652	5.284 to 6.261	7.002 to 8.216
140.	APR2243	3.473 to 4.998	5.224 to 6.307	6.634 to 7.955
141.	APR2150	1.130 to 4.945	4.510 to 6.889	6.709 to 10.02
142.	APR2274	3.008 to 4.599	5.091 to 6.185	6.790 to 8.156
143.	APR2218	3.762 to 4.684	5.239 to 5.918	6.511 to 7.358
144.	APR2170	3.098 to 4.858	4.938 to 6.194	6.375 to 7.933
145.	APR2176	2.931 to 4.437	4.954 to 6.003	6.616 to 7.930

146.	APR2204	2.618 to 4.467	4.815 to 6.085	6.557 to 8.158
147.	APR2200	3.336 to 4.554	4.934 to 5.830	6.252 to 7.390
148.	APR2157	2.203 to 4.404	4.550 to 6.051	6.346 to 8.253
149.	APR2147	2.435 to 4.245	4.443 to 5.723	6.004 to 7.647
150.	APR2155	2.598 to 3.867	4.319 to 5.238	5.710 to 6.938
151.	APR2177	0.8949 to 3.874	3.754 to 5.702	5.814 to 8.334
152.	APR2142	2.431 to 3.479	4.134 to 4.883	5.553 to 6.573

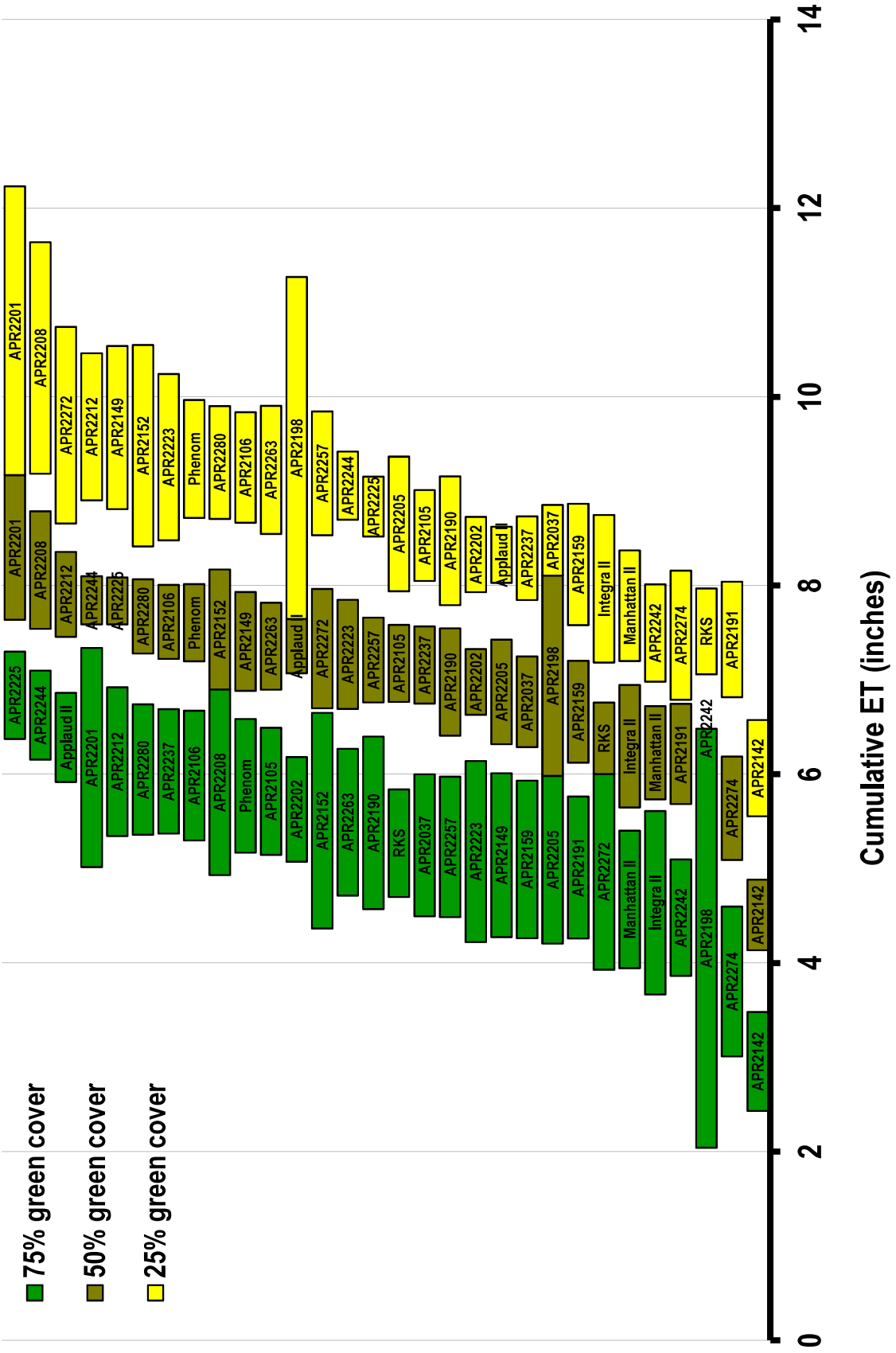


Figure 2. Confidence intervals (95%) for the amount of moisture lost to evapotranspiration after irrigation is withheld before selections from data set 08ALP1 reach 75, 50, and 25% green cover.