

Table 2. Confidence intervals (95%) for the amount of moisture lost to evapotranspiration before 35 perennial ryegrass entries from data set 15ALP1 reach 75, 50, and 25% green cover. Entries are ranked based on their ET₅₀ values.

Rank	Selection	ET ₇₅	ET ₅₀	ET ₂₅
1.	APR2225	7.195 to 7.786	8.823 to 9.240	10.26 to 10.89
2.	APR2212	7.251 to 7.784	8.703 to 9.073	9.990 to 10.53
3.	APR2847	6.892 to 7.561	8.558 to 9.031	10.02 to 10.71
4.	APR2842	6.795 to 7.476	8.540 to 9.026	10.07 to 10.79
5.	APR2843	6.561 to 7.438	8.423 to 9.055	10.01 to 10.95
6.	NP-3	6.775 to 7.673	8.397 to 9.028	9.745 to 10.66
7.	APR2719	6.487 to 7.130	8.351 to 8.817	10.01 to 10.70
8.	APR2237	6.501 to 7.102	8.237 to 8.669	9.794 to 10.42
9.	NP-1	6.653 to 7.272	8.137 to 8.574	9.446 to 10.05
10.	APR2846	6.287 to 6.939	8.098 to 8.572	9.715 to 10.40
11.	APR2845	6.251 to 6.928	8.064 to 8.555	9.676 to 10.38
12.	APR2872	6.251 to 6.999	8.038 to 8.580	9.604 to 10.38
13.	APR2293	6.294 to 7.059	7.987 to 8.538	9.459 to 10.24
14.	APR2703	6.394 to 7.050	7.996 to 8.466	9.411 to 10.07
15.	APR2154	6.273 to 6.847	7.984 to 8.400	9.529 to 10.12
16.	APR2844	6.329 to 6.889	7.983 to 8.388	9.477 to 10.05
17.	APR2282	6.014 to 6.696	7.918 to 8.420	9.620 to 10.35
18.	Shining Star	6.433 to 7.259	7.870 to 8.455	9.080 to 9.877
19.	APR2848	5.867 to 6.705	7.804 to 8.421	9.492 to 10.38
20.	Manhattan VI	5.677 to 6.512	7.783 to 8.406	9.635 to 10.55
21.	APR2445	6.004 to 6.765	7.793 to 8.350	9.364 to 10.15
22.	APR2687	6.090 to 6.715	7.800 to 8.256	9.333 to 9.974
23.	APR2841	5.908 to 6.499	7.663 to 8.099	9.251 to 9.865
24.	NP-2	6.161 to 6.764	7.651 to 8.089	8.979 to 9.577
25.	APR2692	6.002 to 6.863	7.530 to 8.158	8.828 to 9.684
26.	APR2840	5.460 to 6.501	7.412 to 8.189	9.065 to 10.17
27.	Pop	5.705 to 6.572	7.468 to 8.110	8.991 to 9.889
28.	Penquin	5.944 to 6.678	7.449 to 7.988	8.758 to 9.492
29.	APRT2114	5.928 to 6.593	7.472 to 7.962	8.838 to 9.508
30.	APR2300	5.897 to 6.583	7.456 to 7.961	8.831 to 9.524
31.	AMFT118	5.675 to 6.339	7.393 to 7.889	8.929 to 9.620
32.	APR2649	5.442 to 6.168	7.304 to 7.850	8.962 to 9.735
33.	Applaud II	5.959 to 6.447	7.366 to 7.728	8.646 to 9.136
34.	AMF117	4.569 to 5.318	6.158 to 6.750	7.542 to 8.386
35.	Protege GLR	4.166 to 4.901	6.114 to 6.684	7.849 to 8.681

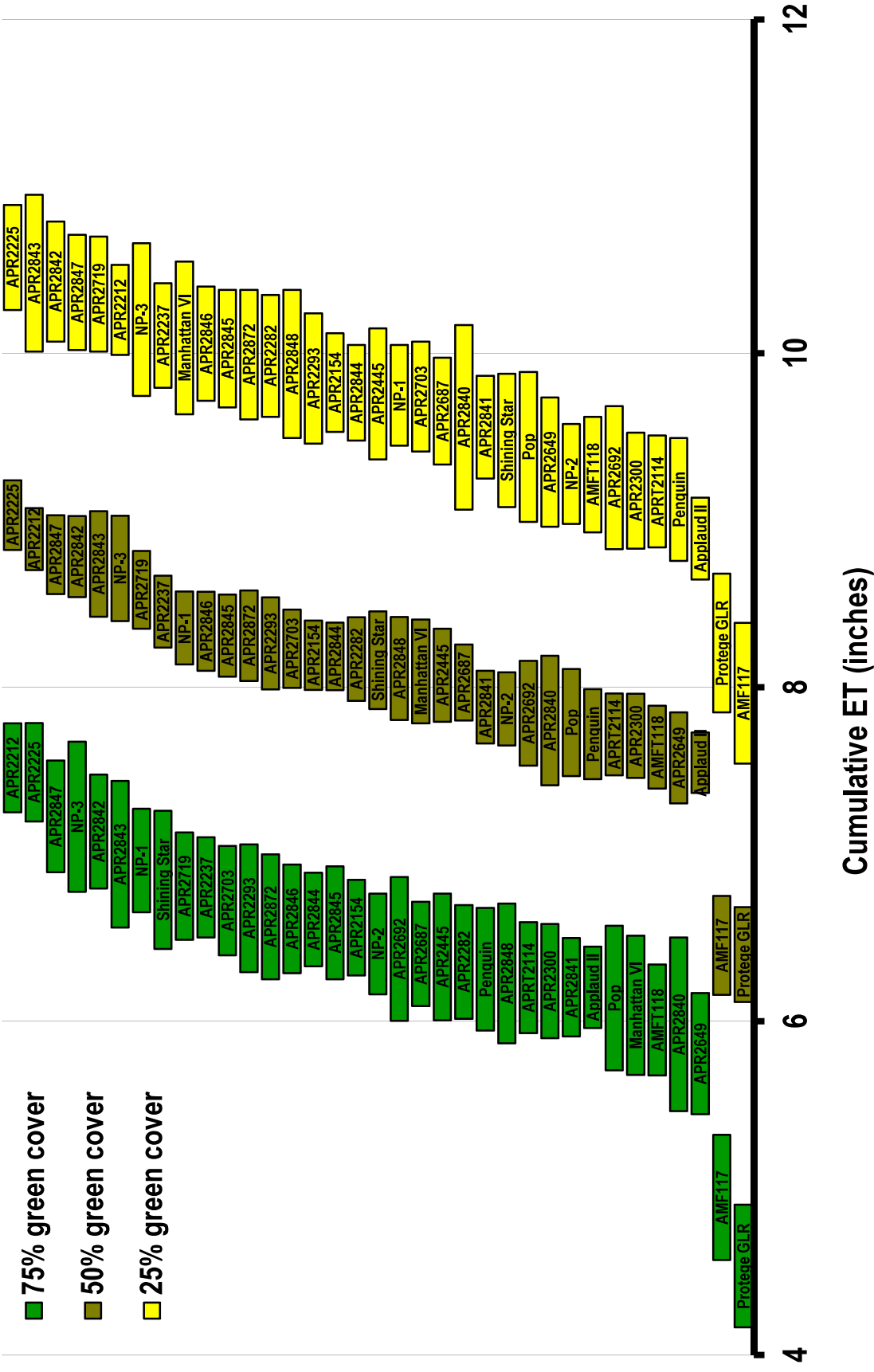


Figure 2. Confidence intervals (95%) for the moisture lost to evapotranspiration before the 35 perennial ryegrass entries from data set 15ALP1 reach 75, 50, and 25% green cover.