

Table 2. Confidence intervals (95%) for the amount of moisture lost to evapotranspiration before 37 perennial ryegrass entries from data set 15ALP7 reach 75, 50, and 25% green cover. Entries are ranked based on their ET₅₀ values.

Rank	Selection		ET ₅₀	ET ₂₅
1.	APR2320	4.826 to 5.422	6.437 to 6.925	7.854 to 8.622
2.	APR2616	4.758 to 5.393	6.388 to 6.908	7.811 to 8.629
3.	APR2536	4.586 to 5.270	6.283 to 6.845	7.754 to 8.647
4.	APR2186	4.754 to 5.287	6.305 to 6.739	7.688 to 8.360
5.	APR2463	4.200 to 4.948	6.196 to 6.816	7.920 to 8.955
6.	APR2436	4.778 to 5.264	6.229 to 6.622	7.532 to 8.129
7.	APR2351	4.755 to 5.152	6.254 to 6.576	7.630 to 8.123
8.	APR2719	4.462 to 5.058	6.154 to 6.640	7.649 to 8.419
9.	APR2535	4.448 to 5.024	6.155 to 6.625	7.670 to 8.416
10.	APR2679	4.350 to 5.202	5.972 to 6.665	7.322 to 8.399
11.	APR2198	4.132 to 4.963	5.904 to 6.579	7.396 to 8.474
12.	APR2613	4.331 to 4.890	5.966 to 6.419	7.420 to 8.129
13.	Applaud II	4.506 to 5.028	5.971 to 6.395	7.276 to 7.921
14.	APR2637	4.389 to 4.877	5.832 to 6.227	7.125 to 7.727
15.	APR2462	4.246 to 4.700	5.840 to 6.206	7.288 to 7.859
16.	APR2451	4.396 to 4.930	5.791 to 6.224	7.025 to 7.680
17.	APR2450	4.396 to 4.928	5.782 to 6.214	7.008 to 7.659
18.	APR2790	4.295 to 4.845	5.767 to 6.213	7.068 to 7.750
19.	APR2283	4.157 to 4.884	5.668 to 6.257	6.952 to 7.855
20.	APR2445	4.188 to 4.788	5.700 to 6.185	7.024 to 7.770
21.	APR2223	4.040 to 4.643	5.659 to 6.144	7.082 to 7.840
22.	APR2104	3.909 to 4.635	5.584 to 6.166	7.021 to 7.937
23.	APR2612	4.271 to 4.753	5.673 to 6.065	6.929 to 7.523
24.	APR2524	4.156 to 4.728	5.535 to 6.000	6.741 to 7.446
25.	APR2282	3.798 to 4.399	5.470 to 5.947	6.942 to 7.695
26.	Soprano	3.728 to 4.540	5.365 to 6.011	6.734 to 7.748
27.	APR2149	3.676 to 4.410	5.395 to 5.975	6.867 to 7.788
28.	APR2263	3.860 to 4.564	5.400 to 5.965	6.714 to 7.591
29.	Penguin	4.022 to 4.642	5.400 to 5.903	6.587 to 7.354
30.	APR2154	3.835 to 4.441	5.398 to 5.882	6.765 to 7.520
31.	APR2609	3.690 to 4.571	5.208 to 5.912	6.443 to 7.536
32.	APR2195	3.903 to 4.600	5.264 to 5.829	6.409 to 7.274
33.	APR2115	3.781 to 4.437	5.281 to 5.804	6.570 to 7.383
34.	Pop	3.727 to 4.275	5.293 to 5.725	6.677 to 7.356
35.	APR2448	3.156 to 4.206	4.879 to 5.683	6.240 to 7.521
36.	Protege GLR	3.099 to 3.760	4.925 to 5.417	6.515 to 7.309
37.	APR2617	2.774 to 3.633	4.543 to 5.162	6.005 to 6.998

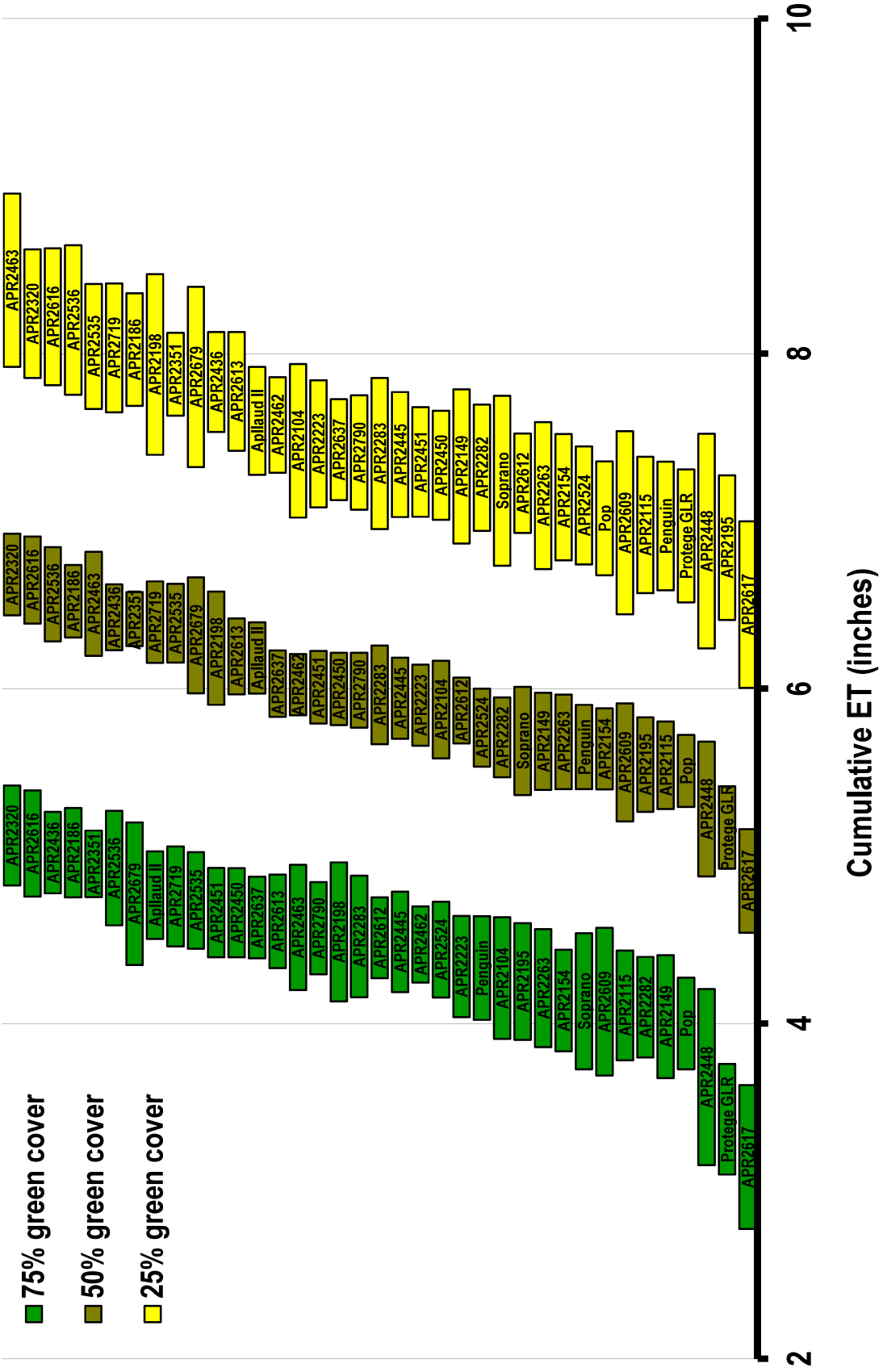


Figure 2. Confidence intervals (95%) for the moisture lost to evapotranspiration before the 37 perennial ryegrass entries from data set 15ALP7 reach 75, 50, and 25% green cover.