

Table 4. Confidence intervals (95%) for the amount of moisture lost to evapotranspiration after irrigation is withheld before selections from data set 09AFA1 reach 75, 50, and 25% green cover. Selections are ranked based on their ET₅₀ values.

Rank	Selection	ET ₇₅	ET ₅₀	ET ₂₅
1.	ATF1375	7.853 to 9.026	9.987 to 10.90	11.59 to 13.32
2.	ATF1252	8.154 to 9.204	9.982 to 10.75	11.36 to 12.75
3.	ATF1258	8.559 to 9.284	10.10 to 10.61	11.35 to 12.24
4.	ATF1535	8.297 to 8.959	10.10 to 10.59	11.63 to 12.51
5.	ATF1349	8.330 to 9.042	9.983 to 10.48	11.35 to 12.21
6.	ATF1374	8.067 to 9.000	9.889 to 10.55	11.32 to 12.50
7.	Rebel II	7.730 to 8.839	9.708 to 10.50	11.22 to 12.62
8.	2nd Millennium	8.091 to 8.773	9.812 to 10.28	11.26 to 12.06
9.	Rebel Pro	8.072 to 8.801	9.754 to 10.25	11.15 to 11.99
10.	Falcon IV	7.599 to 8.525	9.632 to 10.29	11.29 to 12.43
11.	Penn 1901	7.613 to 8.585	9.583 to 10.26	11.16 to 12.33
12.	Signia	7.389 to 8.627	9.483 to 10.36	11.07 to 12.60
13.	ATF1518	7.843 to 8.597	9.630 to 10.15	11.13 to 11.99
14.	ATF1537	7.727 to 8.532	9.592 to 10.15	11.14 to 12.08
15.	ATF1376	7.338 to 8.287	9.484 to 10.16	11.25 to 12.41
16.	ATF1545	7.837 to 8.453	9.609 to 10.03	11.15 to 11.84
17.	Rebel III	7.586 to 8.468	9.510 to 10.12	11.09 to 12.11
18.	Rebel Exeda	7.666 to 8.610	9.488 to 10.13	10.95 to 12.01
19.	ATF1255	7.772 to 8.482	9.554 to 10.04	11.07 to 11.86
20.	ATF1200	7.483 to 8.500	9.435 to 10.14	10.99 to 12.17
21.	Shenandoah Elite	7.904 to 8.514	9.452 to 9.859	10.79 to 11.41
22.	ATF1536	7.850 to 8.418	9.450 to 9.832	10.85 to 11.44
23.	Greystone	7.555 to 8.359	9.336 to 9.880	10.83 to 11.69
24.	ATF1373	6.851 to 8.103	9.165 to 10.05	10.98 to 12.49
25.	ATF1517	7.425 to 8.160	9.349 to 9.853	11.00 to 11.82
26.	Rebel Advance	7.563 to 8.401	9.300 to 9.865	10.74 to 11.62
27.	Pedigree	7.651 to 8.303	9.335 to 9.773	10.79 to 11.47
28.	Rebel Sentry	7.523 to 8.358	9.256 to 9.819	10.70 to 11.57
29.	Rebel 2000	7.655 to 8.406	9.272 to 9.775	10.64 to 11.40
30.	Greystone II	7.077 to 7.817	9.254 to 9.769	11.15 to 12.01
31.	LW	6.921 to 8.506	8.946 to 10.02	10.40 to 12.11
32.	RK4	7.605 to 8.137	9.292 to 9.651	10.80 to 11.35
33.	Rebel IV	7.148 to 8.128	9.072 to 9.737	10.65 to 11.69
34.	Rebel Advance/AMF112	7.201 to 8.108	9.091 to 9.706	10.66 to 11.62
35.	ATF1534	7.081 to 8.110	8.984 to 9.680	10.53 to 11.60
36.	ATF1377	7.367 to 8.087	9.081 to 9.565	10.56 to 11.28
37.	ATF1538	7.445 to 8.120	9.088 to 9.541	10.51 to 11.18
38.	Regiment II	7.093 to 7.783	9.071 to 9.541	10.80 to 11.54
39.	ATF1521	7.327 to 7.886	9.011 to 9.388	10.52 to 11.07
40.	Rebel Advance/APRT2114	6.972 to 8.075	8.787 to 9.532	10.25 to 11.35
41.	Wyatt	7.210 to 7.840	8.889 to 9.315	10.37 to 10.99
42.	Justice	7.241 to 7.789	8.844 to 9.215	10.28 to 10.81

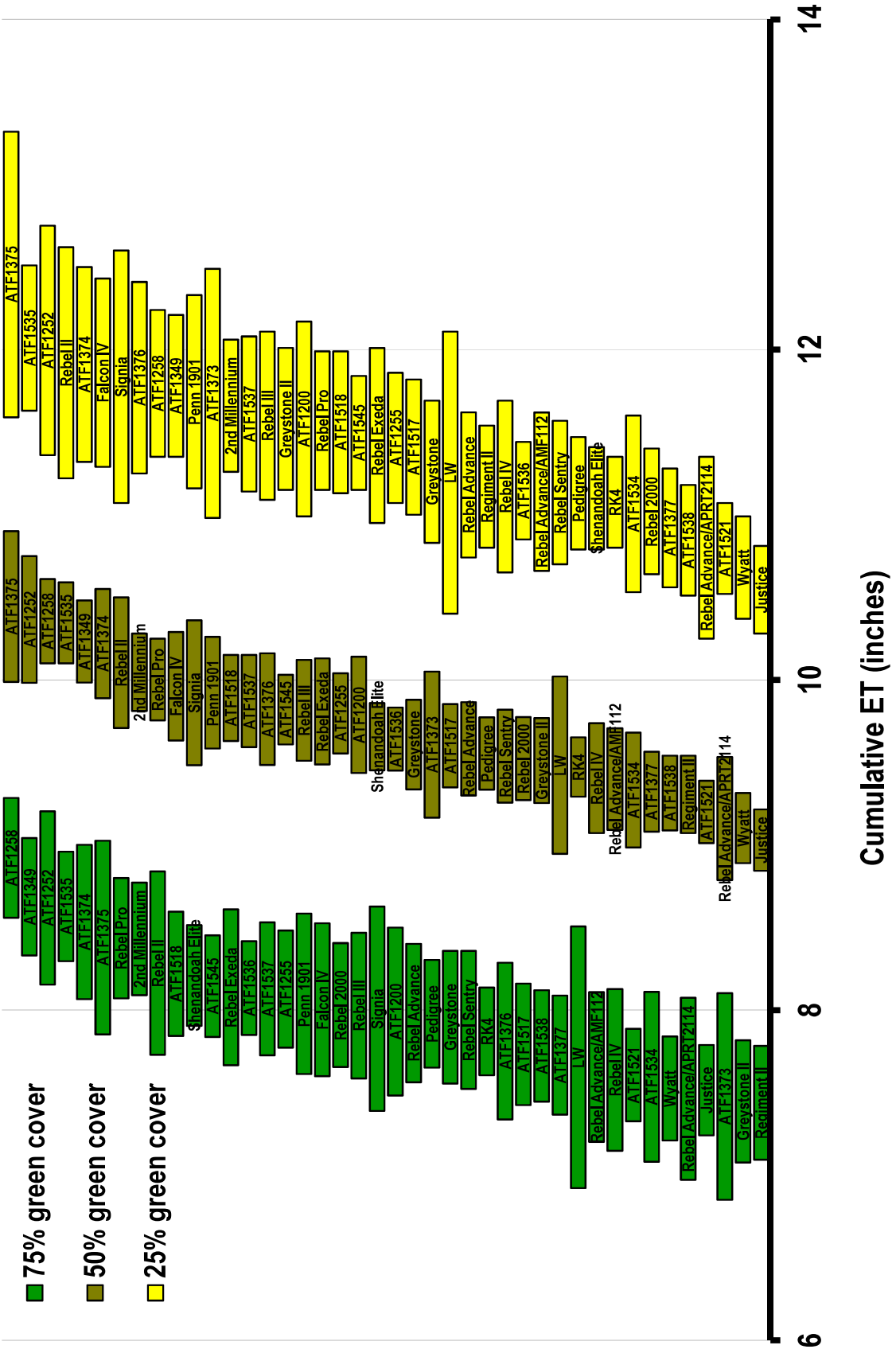


Figure 4. Confidence intervals (95%) for the amount of moisture lost to evapotranspiration after irrigation is withheld before selections from data set 09AFAI reach 75, 50, and 25% green cover.