

**Table 2. Confidence intervals (95%) for the amount of moisture lost to evapotranspiration after irrigation is withheld before selections (10AFA1 data set) reach 75, 50, and 25% green cover. Selections are ranked based on their ET<sub>50</sub> values.**

Rank	Selection	ET <sub>75</sub>	ET <sub>50</sub>	ET <sub>25</sub>
1.	Finelawn Elite	8.558 to 9.399	10.77 to 11.43	12.63 to 13.82
2.	ATF1376	8.013 to 9.195	10.38 to 11.29	12.27 to 13.88
3.	ATF1591	8.279 to 9.050	10.51 to 11.09	12.43 to 13.45
4.	ATF1593	8.292 to 9.066	10.44 to 11.02	12.29 to 13.28
5.	ATF1585	7.854 to 8.557	10.30 to 10.84	12.47 to 13.40
6.	ATF1252	8.529 to 8.857	10.43 to 10.66	12.21 to 12.59
7.	ATF1254	8.185 to 8.961	10.16 to 10.72	11.85 to 12.75
8.	ATF1594	8.082 to 8.720	10.15 to 10.62	11.99 to 12.75
9.	ATF1493	8.117 to 8.658	10.13 to 10.52	11.96 to 12.58
10.	ATF1467	7.630 to 8.632	9.947 to 10.68	11.88 to 13.10
11.	ATF1468	7.609 to 8.475	9.957 to 10.59	11.98 to 13.03
12.	ATF1573	7.959 to 8.503	10.03 to 10.42	11.91 to 12.54
13.	ATF1552	7.847 to 8.408	9.919 to 10.32	11.79 to 12.43
14.	ATF1606	7.599 to 8.447	9.812 to 10.42	11.72 to 12.70
15.	ATF1561	7.752 to 8.382	9.859 to 10.31	11.74 to 12.46
16.	ATF1588	7.919 to 8.372	9.910 to 10.23	11.74 to 12.25
17.	Rebel Exeda	8.092 to 8.372	9.935 to 10.13	11.68 to 11.99
18.	ATF1599	7.613 to 8.457	9.722 to 10.32	11.53 to 12.48
19.	ATF1597	7.740 to 8.651	9.693 to 10.34	11.34 to 12.33
20.	ATF1563FS	7.759 to 8.137	9.848 to 10.12	11.80 to 12.23
21.	Falcon IV	7.744 to 8.365	9.757 to 10.20	11.56 to 12.24
22.	ATF1257	8.095 to 8.442	9.811 to 10.05	11.41 to 11.78
23.	Virtue II	7.985 to 8.508	9.739 to 10.11	11.32 to 11.87
24.	Signia	7.795 to 8.244	9.759 to 10.08	11.57 to 12.06
25.	ATF1572	7.714 to 8.483	9.630 to 10.17	11.29 to 12.12
26.	Wyatt	7.564 to 8.418	9.585 to 10.19	11.32 to 12.25
27.	ATF1602	7.966 to 8.327	9.738 to 9.992	11.39 to 11.77
28.	ATF1589	7.794 to 8.161	9.725 to 9.984	11.53 to 11.93
29.	ATF1581	7.366 to 8.242	9.537 to 10.16	11.41 to 12.38
30.	ATF1251	7.382 to 8.471	9.451 to 10.22	11.15 to 12.34
31.	ATF1600	7.659 to 8.167	9.645 to 10.00	11.46 to 12.01
32.	ATF1620	7.597 to 8.269	9.559 to 10.03	11.30 to 12.02
33.	ATF1576	7.550 to 8.087	9.588 to 9.967	11.44 to 12.03
34.	ATF1619	7.817 to 8.325	9.589 to 9.945	11.20 to 11.73
35.	ATF1579	7.472 to 8.463	9.406 to 10.10	11.02 to 12.06
36.	ATF1603	7.743 to 8.276	9.549 to 9.923	11.19 to 11.74
37.	ATF1596	7.639 to 8.322	9.482 to 9.963	11.11 to 11.82
38.	ATF1413	7.535 to 8.133	9.508 to 9.929	11.28 to 11.92
39.	FCE3	7.819 to 8.252	9.551 to 9.855	11.15 to 11.59
40.	ATF1583	7.637 to 8.185	9.506 to 9.892	11.20 to 11.78
41.	ATF1563R	7.680 to 8.054	9.560 to 9.823	11.32 to 11.71
42.	ATF1555	7.245 to 8.195	9.345 to 10.01	11.13 to 12.15
43.	ATF1584	7.616 to 8.035	9.526 to 9.821	11.30 to 11.74
44.	2nd Millenium	7.491 to 8.179	9.427 to 9.911	11.14 to 11.87
45.	ATF1475	7.664 to 8.342	9.429 to 9.906	10.98 to 11.68

46.	ATF1560	7.343 to 8.164	9.377 to 9.955	11.14 to 12.02
47.	ATF1463	7.268 to 8.122	9.364 to 9.967	11.18 to 12.10
48.	Regiment II	7.166 to 8.014	9.364 to 9.964	11.27 to 12.20
49.	ATF1621	7.752 to 8.257	9.482 to 9.837	11.05 to 11.57
50.	ATF1554	7.307 to 8.118	9.367 to 9.938	11.16 to 12.03
51.	ATF1255	7.504 to 8.137	9.428 to 9.874	11.15 to 11.82
52.	ATF1598	7.232 to 8.092	9.340 to 9.946	11.16 to 12.09
53.	ATF1618	7.507 to 8.374	9.317 to 9.925	10.86 to 11.75
54.	ATF1503	7.581 to 8.033	9.442 to 9.760	11.16 to 11.63
55.	ATF1582	7.631 to 8.177	9.400 to 9.783	11.00 to 11.56
56.	ATF1595	7.486 to 8.088	9.370 to 9.793	11.06 to 11.69
57.	ATF1577	7.444 to 8.058	9.341 to 9.772	11.04 to 11.68
58.	ATF1580	7.681 to 8.018	9.436 to 9.673	11.09 to 11.43
59.	Falcon V	7.651 to 8.054	9.390 to 9.673	11.00 to 11.42
60.	ATF1258	7.516 to 7.979	9.351 to 9.676	11.04 to 11.52
61.	ATF1469	6.862 to 8.068	9.073 to 9.923	10.88 to 12.18
62.	ATF1575	7.290 to 7.870	9.248 to 9.655	11.02 to 11.63
63.	ATF1605	7.436 to 7.973	9.239 to 9.616	10.88 to 11.43
64.	ATF1426	7.314 to 7.788	9.247 to 9.579	11.03 to 11.52
65.	ATF1574	7.633 to 8.071	9.251 to 9.560	10.74 to 11.18
66.	ATF1412	6.841 to 7.938	9.012 to 9.783	10.83 to 11.99
67.	ATF1592	7.635 to 7.899	9.292 to 9.478	10.87 to 11.14
68.	ATF1587	7.551 to 8.140	9.173 to 9.588	10.62 to 11.21
69.	ATF1474	7.416 to 7.844	9.122 to 9.423	10.70 to 11.13
70.	ATF1586	6.931 to 7.909	8.863 to 9.549	10.49 to 11.49
71.	ATF1553	7.083 to 7.806	8.840 to 9.349	10.38 to 11.11
72.	ATF1604	6.881 to 7.490	8.844 to 9.271	10.62 to 11.24
73.	ATF1402	6.752 to 7.656	8.692 to 9.327	10.36 to 11.27
74.	ATF1601	7.176 to 7.693	8.820 to 9.186	10.31 to 10.83
75.	ATF1471	6.909 to 7.747	8.688 to 9.279	10.22 to 11.06
76.	ATF1578	7.176 to 7.460	8.804 to 9.005	10.35 to 10.63
77.	ATF1470	7.113 to 7.580	8.690 to 9.020	10.13 to 10.60
78.	ATF1563S	7.185 to 7.537	8.720 to 8.970	10.15 to 10.50
79.	Greystone II	6.675 to 7.147	8.624 to 8.955	10.43 to 10.91
80.	KY-31	6.457 to 7.120	8.447 to 8.912	10.24 to 10.90
81.	ATF1607	6.773 to 7.197	8.406 to 8.706	9.917 to 10.34
82.	ATF1590	6.659 to 7.323	8.108 to 8.580	9.369 to 10.03

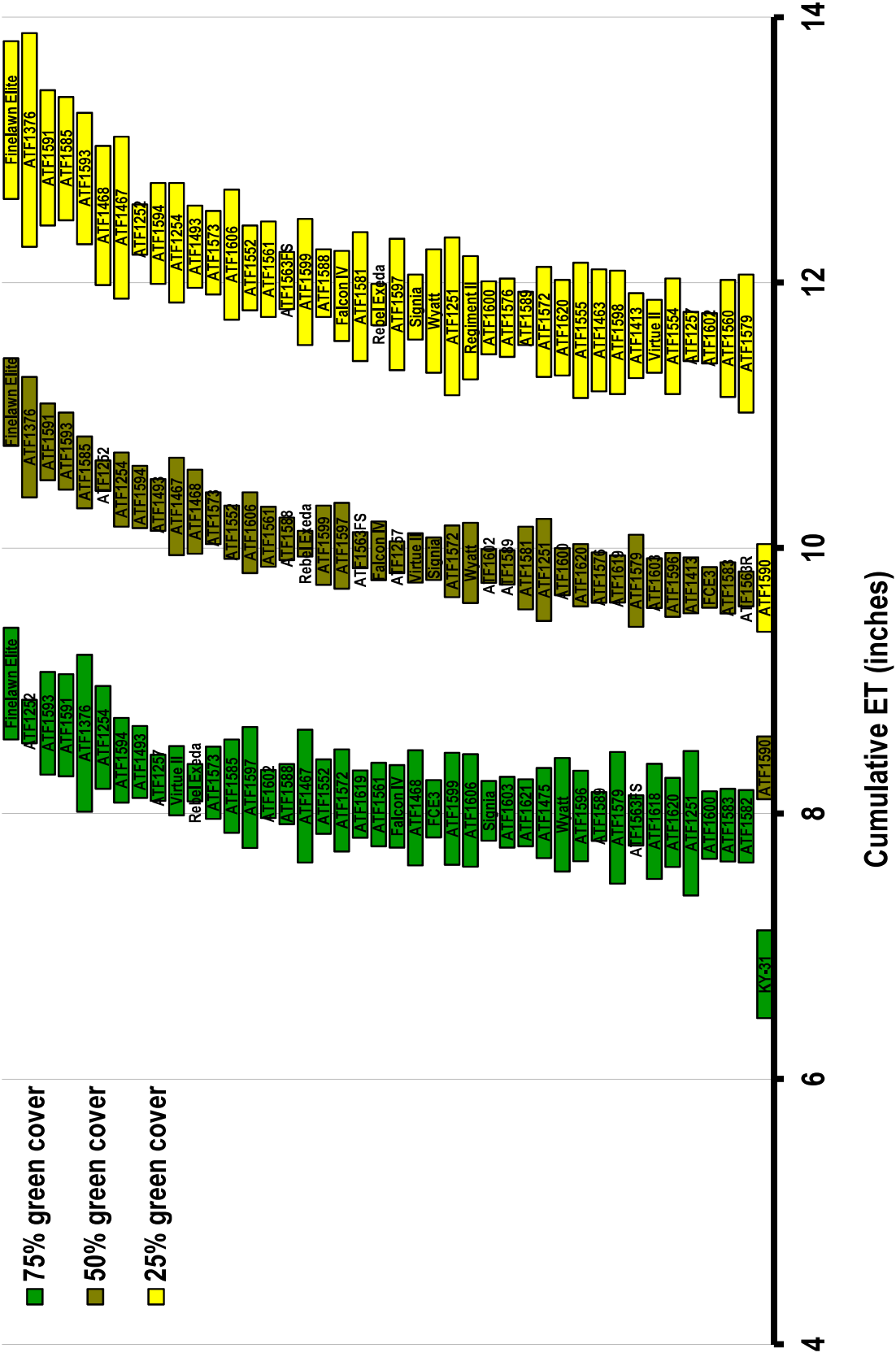
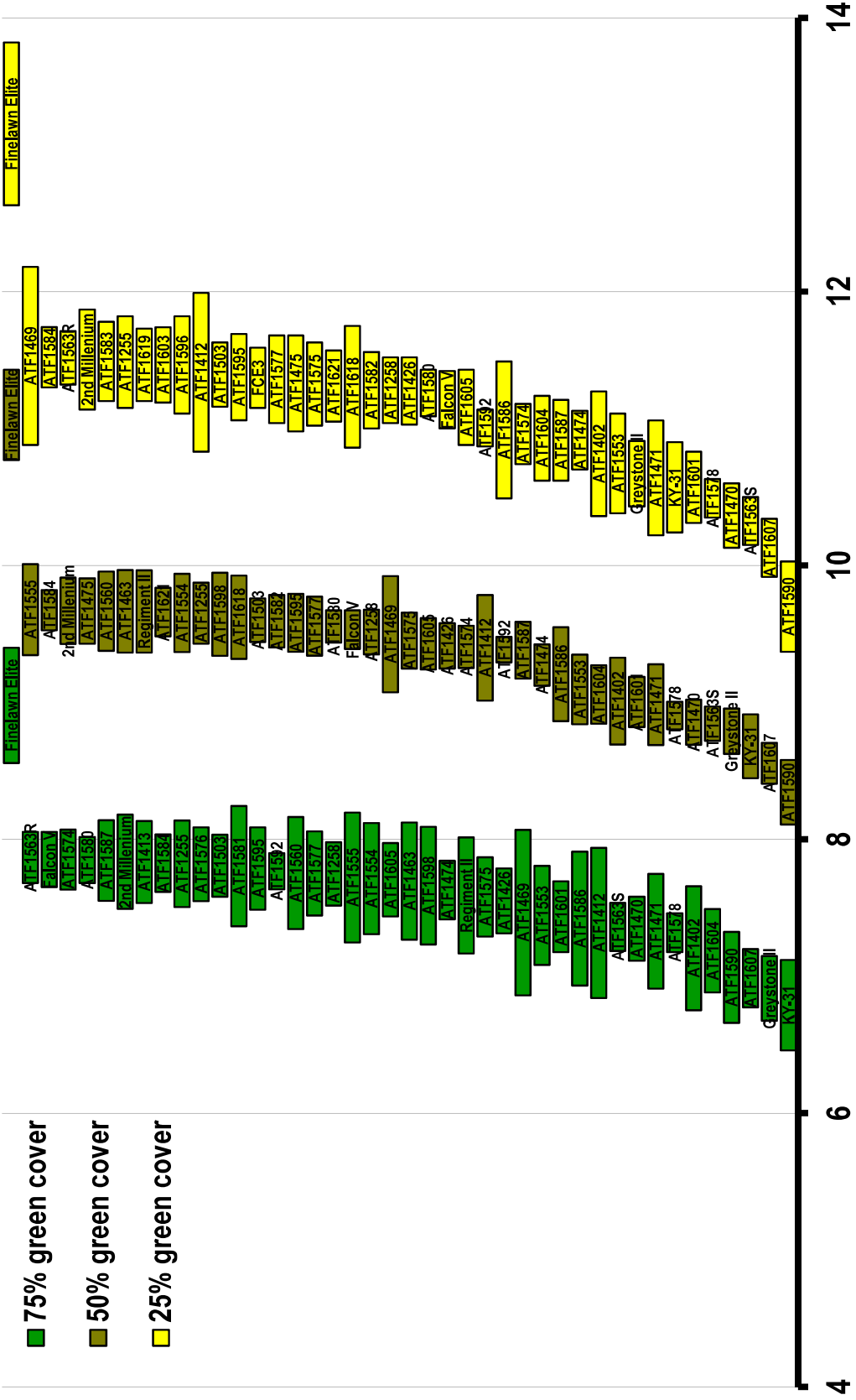
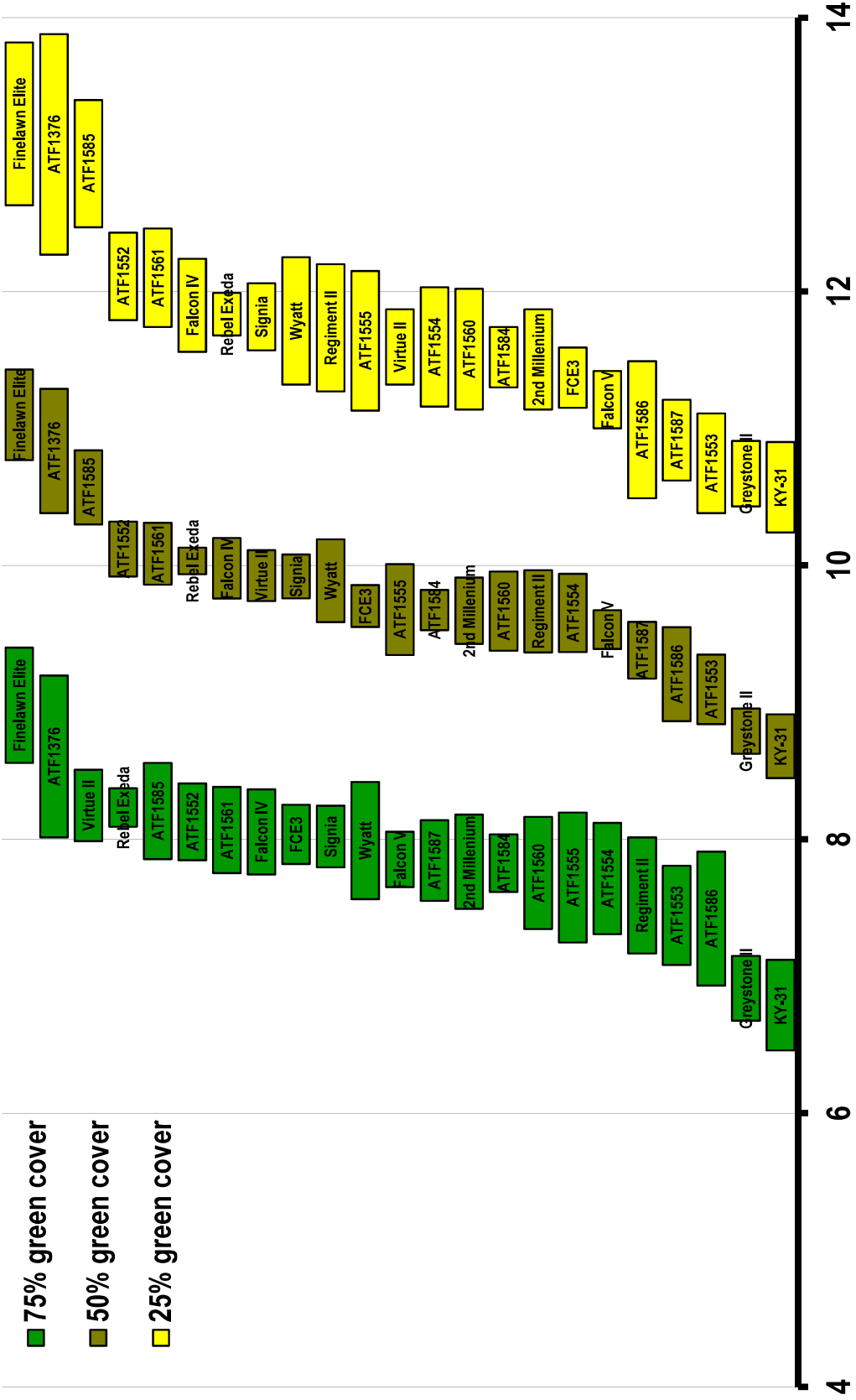


Figure 4. Confidence intervals (95%) for the amount of moisture lost to evapotranspiration after irrigation is withheld before the top half of the selections from data set 10AFAI reach 75, 50, and 25% green cover. The bottom performing selection is included to indicate the total range of drought tolerance in the data set.



Cumulative ET (inches)

Figure 5. Confidence intervals (95%) for the amount of moisture lost to evapotranspiration after irrigation is withheld before the bottom half of the selections from data set 10FAFA1 reach 75, 50, and 25% green cover. The top performing selection is included to indicate the total range of drought tolerance in the data set.



**Cumulative ET (inches)**

Figure 6. Confidence intervals (95%) for 23 selections from data set 10AFAI1 for the amount of moisture lost to evapotranspiration after irrigation is withheld before the selections reach 75, 50, and 25% green cover.