

Table 2. Confidence intervals (95%) for the amount of moisture lost to evapotranspiration after irrigation is withheld before 82 entries from data set 10AFA1 reach 75, 50, and 25% green cover. Entries are ranked based on their ET₅₀ values.

Rank	Entry	ET ₇₅	ET ₅₀	ET ₂₅
1.	ATF1376	9.687 to 10.43	12.53 to 13.07	15.08 to 15.99
2.	ATF1591	9.662 to 10.39	12.36 to 12.88	14.79 to 15.65
3.	ATF1585	9.586 to 10.10	12.40 to 12.77	15.02 to 15.63
4.	Falcon IV	9.780 to 10.42	12.21 to 12.66	14.41 to 15.11
5.	ATF1579	9.898 to 10.40	12.19 to 12.54	14.32 to 14.85
6.	ATF1594	9.689 to 10.37	12.06 to 12.53	14.21 to 14.93
7.	ATF1552	9.140 to 9.982	11.90 to 12.50	14.37 to 15.31
8.	ATF1587	9.711 to 10.25	12.01 to 12.38	14.13 to 14.69
9.	ATF1606	9.678 to 10.11	12.01 to 12.31	14.21 to 14.66
10.	ATF1467	9.382 to 10.02	11.89 to 12.33	14.18 to 14.86
11.	ATF1573	9.529 to 10.25	11.84 to 12.34	13.91 to 14.66
12.	Finelawn Elite	9.315 to 9.873	11.88 to 12.28	14.26 to 14.87
13.	ATF1254	8.907 to 10.12	11.60 to 12.46	13.88 to 15.20
14.	ATF1593	8.760 to 9.863	11.60 to 12.39	14.07 to 15.29
15.	ATF1589	9.180 to 9.978	11.66 to 12.22	13.89 to 14.72
16.	ATF1252	9.298 to 9.655	11.79 to 12.04	14.17 to 14.55
17.	ATF1554	9.268 to 9.828	11.73 to 12.12	14.01 to 14.59
18.	Virtue II	9.574 to 9.919	11.78 to 12.02	13.88 to 14.22
19.	ATF1597	9.369 to 9.715	11.75 to 11.99	14.02 to 14.38
20.	ATF1468	9.118 to 9.777	11.63 to 12.09	13.93 to 14.63
21.	ATF1574	9.146 to 9.748	11.64 to 12.06	13.94 to 14.57
22.	ATF1493	9.022 to 9.644	11.58 to 12.01	13.93 to 14.59
23.	ATF1580	9.157 to 9.861	11.51 to 12.00	13.64 to 14.36
24.	ATF1600	9.142 to 9.741	11.55 to 11.97	13.77 to 14.38
25.	ATF1572	8.826 to 9.573	11.45 to 11.98	13.84 to 14.63
26.	ATF1581	8.742 to 9.410	11.47 to 11.94	13.98 to 14.70
27.	ATF1586	9.149 to 9.743	11.50 to 11.91	13.66 to 14.27
28.	ATF1603	9.340 to 9.790	11.54 to 11.85	13.59 to 14.04
29.	ATF1620	9.084 to 9.643	11.50 to 11.89	13.74 to 14.31
30.	ATF1257	9.420 to 9.817	11.54 to 11.82	13.54 to 13.94
31.	ATF1426	9.066 to 9.564	11.51 to 11.86	13.80 to 14.31
32.	ATF1582	9.046 to 9.541	11.49 to 11.83	13.77 to 14.28
33.	ATF1412	8.989 to 9.615	11.43 to 11.87	13.67 to 14.31
34.	Signia	9.105 to 9.631	11.46 to 11.83	13.66 to 14.19
35.	Regiment II	9.010 to 9.593	11.43 to 11.84	13.67 to 14.27
36.	ATF1577	8.902 to 9.485	11.43 to 11.84	13.77 to 14.38
37.	ATF1413	8.756 to 9.387	11.38 to 11.82	13.80 to 14.46
38.	ATF1251	8.686 to 9.469	11.30 to 11.85	13.66 to 14.48
39.	ATF1595	9.125 to 9.520	11.44 to 11.72	13.63 to 14.03
40.	ATF1475	9.333 to 9.750	11.42 to 11.71	13.39 to 13.80
41.	ATF1255	8.765 to 9.615	11.25 to 11.84	13.47 to 14.34
42.	ATF1463	8.765 to 9.822	11.17 to 11.91	13.24 to 14.31
43.	Rebel Exeda	8.817 to 9.312	11.36 to 11.71	13.75 to 14.27

44.	ATF1563FS	8.768 to 9.296	11.34 to 11.71	13.74 to 14.29
45.	ATF1596	8.957 to 9.782	11.17 to 11.75	13.14 to 13.96
46.	ATF1555	8.718 to 9.462	11.19 to 11.71	13.43 to 14.19
47.	ATF1601	8.929 to 9.468	11.26 to 11.64	13.43 to 13.97
48.	FCE3	9.217 to 9.614	11.29 to 11.57	13.25 to 13.64
49.	ATF1583	9.047 to 9.636	11.22 to 11.63	13.21 to 13.79
50.	ATF1618	8.818 to 9.482	11.14 to 11.60	13.26 to 13.93
51.	ATF1605	8.564 to 9.192	11.08 to 11.52	13.40 to 14.05
52.	ATF1578	8.800 to 9.244	11.13 to 11.44	13.32 to 13.77
53.	ATF1588	8.473 to 9.420	10.94 to 11.60	13.11 to 14.07
54.	ATF1469	8.655 to 9.526	10.96 to 11.57	13.01 to 13.87
55.	ATF1602	8.887 to 9.330	11.11 to 11.42	13.20 to 13.64
56.	2nd Millennium	8.777 to 9.154	11.11 to 11.37	13.33 to 13.71
57.	ATF1402	8.402 to 9.335	10.91 to 11.57	13.13 to 14.08
58.	ATF1598	8.795 to 9.387	11.03 to 11.45	13.10 to 13.68
59.	ATF1619	8.500 to 9.355	10.85 to 11.45	12.95 to 13.81
60.	ATF1474	8.724 to 9.387	10.89 to 11.36	12.87 to 13.52
61.	ATF1258	8.545 to 9.194	10.89 to 11.35	13.05 to 13.70
62.	ATF1599	8.441 to 9.061	10.91 to 11.34	13.18 to 13.81
63.	KY-31	8.319 to 9.113	10.84 to 11.40	13.11 to 13.92
64.	ATF1561	7.997 to 8.787	10.81 to 11.37	13.37 to 14.20
65.	Wyatt	7.446 to 9.331	10.41 to 11.75	12.78 to 14.76
66.	ATF1584	8.381 to 9.097	10.79 to 11.30	12.99 to 13.71
67.	ATF1607	8.655 to 9.086	10.89 to 11.19	13.00 to 13.43
68.	ATF1560	7.842 to 8.995	10.62 to 11.44	13.04 to 14.24
69.	ATF1592	8.433 to 8.942	10.80 to 11.16	13.02 to 13.53
70.	ATF1470	8.570 to 9.206	10.74 to 11.18	12.72 to 13.34
71.	ATF1604	8.105 to 8.927	10.60 to 11.18	12.85 to 13.68
72.	ATF1553	8.771 to 9.197	10.71 to 11.01	12.53 to 12.95
73.	ATF1563S	8.110 to 8.691	10.53 to 10.94	12.77 to 13.35
74.	ATF1503	7.926 to 8.695	10.43 to 10.98	12.72 to 13.49
75.	ATF1576	7.167 to 9.007	10.05 to 11.36	12.38 to 14.27
76.	ATF1563R	8.319 to 8.833	10.52 to 10.89	12.58 to 13.09
77.	ATF1471	8.349 to 8.945	10.47 to 10.89	12.42 to 13.01
78.	ATF1621	7.961 to 8.641	10.41 to 10.90	12.67 to 13.35
79.	ATF1590	8.477 to 8.919	10.45 to 10.77	12.30 to 12.73
80.	Falcon V	8.056 to 8.724	10.35 to 10.82	12.45 to 13.11
81.	ATF1575	7.453 to 8.728	10.10 to 11.00	12.37 to 13.65
82.	Greystone II	7.584 to 8.616	9.837 to 10.58	11.80 to 12.82

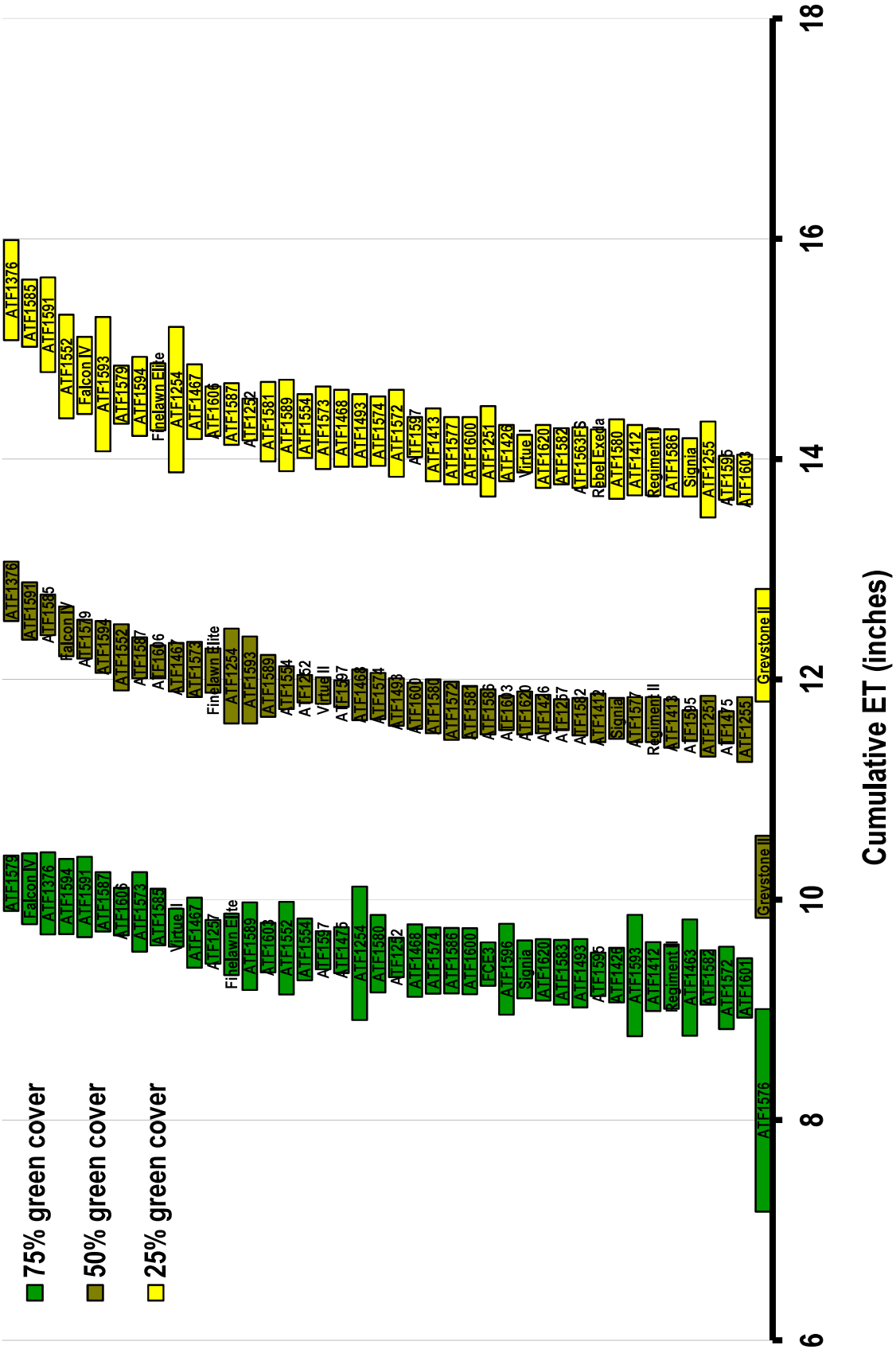


Figure 3. Confidence intervals (95%) for the amount of moisture lost to evapotranspiration after irrigation is withheld before the bottom half of the 82 entries from data set 10AFAI reach 75, 50, and 25% green cover. The bottom performing entry is included for reference.

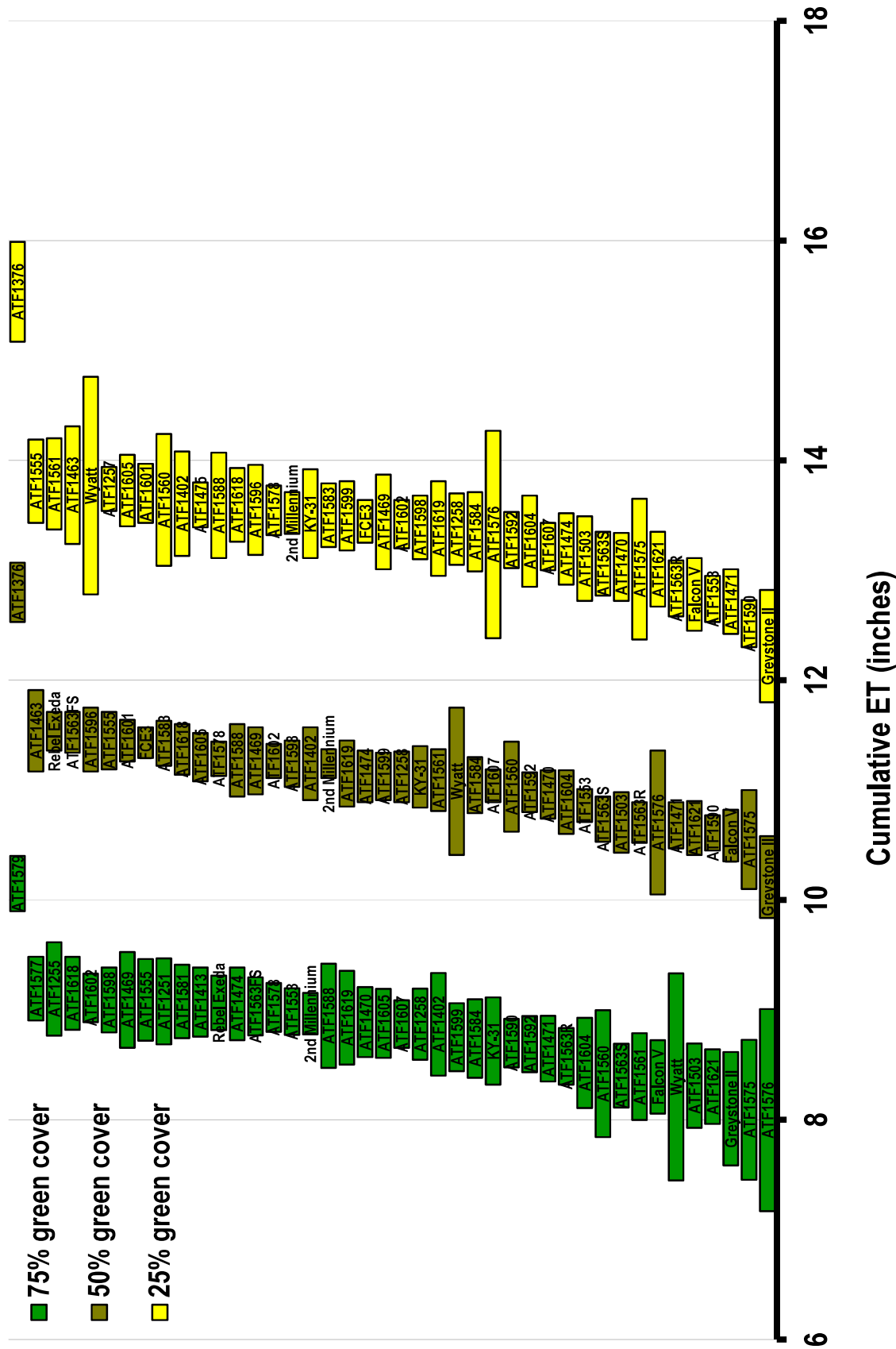


Figure 4. Confidence intervals (95%) for the amount of moisture lost to evapotranspiration after irrigation is withheld before the bottom half of the 82 entries from data set 10AFAI reach 75, 50, and 25% green cover. The top performing entry is included for reference.